



## B3GT5 Monoclonal Antibody

Catalog No	YP-mAb-05373
Isotype	IgG
Reactivity	Human;Rat;Mouse;
Applications	WB
Gene Name	B3GALT5
Protein Name	Beta-1,3-galactosyltransferase 5 (Beta-1,3-GalTase 5) (Beta3Gal-T5) (Beta3GalT5) (b3Gal-T5) (EC 2.4.1.-) (Beta-3-Gx-T5) (UDP-Gal:beta-GlcNAc beta-1,3-galactosyltransferase 5) (UDP-galactose:beta-N-ace
Immunogen	Synthesized peptide derived from human protein . at AA range: 50-130
Specificity	B3GT5 Monoclonal Antibody detects endogenous levels of protein.
Formulation	Liquid in PBS containing 50% glycerol, and 0.02% sodium azide.
Source	Monoclonal, Mouse,IgG
Purification	The antibody was affinity-purified from mouse antiserum by affinity-chromatography using epitope-specific immunogen.
Dilution	WB 1:500-1:2000
Concentration	1 mg/ml
Purity	≥90%
Storage Stability	-20°C/1 year
Synonyms	
Observed Band	34kD
Cell Pathway	Golgi apparatus membrane ; Single-pass type II membrane protein .
Tissue Specificity	Expressed in stomach, jejunum, colon, pancreas, small intestine, testis and gastrointestinal and pancreatic cancer cell lines. Hardly detected in lung, liver, adrenal gland and peripheral blood leukocytes.
Function	function:Catalyzes the transfer of Gal to GlcNAc-based acceptors with a preference for the core3 O-linked glycan GlcNAc(beta1,3)GalNAc structure. Can use glycolipid LC3Cer as an efficient acceptor.,online information:Beta-1,3-galactosyltransferase 5,online information:GlycoGene database,pathway:Protein modification; protein glycosylation.,similarity:Belongs to the glycosyltransferase 31 family.,tissue specificity:Expressed in stomach, jejunum, colon, pancreas, small intestine, testis and gastrointestinal and pancreatic cancer cell lines. Hardly detected in lung, liver, adrenal gland and peripheral blood leukocytes.,
Background	This gene encodes a member of a family of membrane-bound glycoproteins. The encoded protein may synthesize type 1 Lewis antigens, which are elevated in gastrointestinal and pancreatic cancers. Alternatively spliced transcript variants have been observed for this gene, but the full-length nature of some of these



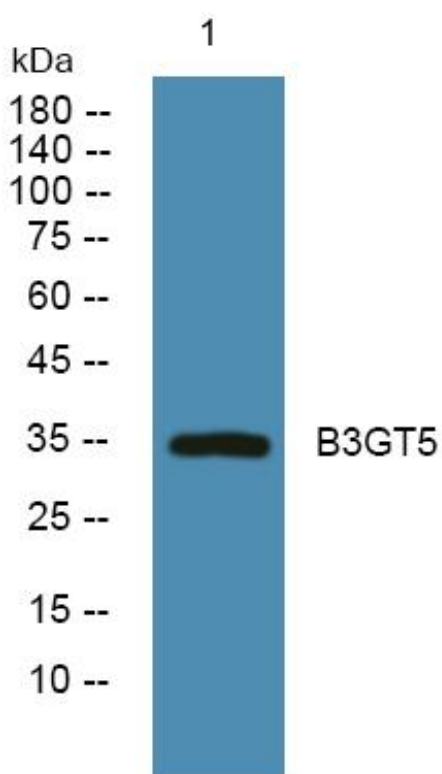
variants has not been determined. [provided by RefSeq, Jul 2013],

**matters needing attention**

Avoid repeated freezing and thawing!

**Usage suggestions**

This product can be used in immunological reaction related experiments. For more information, please consult technical personnel.

**Products Images**

Western Blot analysis of various cells using B3GT5 Monoclonal Antibody