



# AAA1 Monoclonal Antibody

<b>Catalog No</b>	YP-mAb-05336
<b>Isotype</b>	IgG
<b>Reactivity</b>	Human;Mouse;Rat
<b>Applications</b>	WB
<b>Gene Name</b>	SLC7A10 ASC1
<b>Protein Name</b>	Asc-type amino acid transporter 1 (Asc-1) (Solute carrier family 7 member 10)
<b>Immunogen</b>	Synthesized peptide derived from human protein . at AA range: 200-280
<b>Specificity</b>	AAA1 Monoclonal Antibody detects endogenous levels of protein.
<b>Formulation</b>	Liquid in PBS containing 50% glycerol, and 0.02% sodium azide.
<b>Source</b>	Monoclonal, Mouse,IgG
<b>Purification</b>	The antibody was affinity-purified from mouse antiserum by affinity-chromatography using epitope-specific immunogen.
<b>Dilution</b>	WB 1:500-1:2000
<b>Concentration</b>	1 mg/ml
<b>Purity</b>	≥90%
<b>Storage Stability</b>	-20°C/1 year
<b>Synonyms</b>	
<b>Observed Band</b>	57kD
<b>Cell Pathway</b>	Membrane ; Multi-pass membrane protein .
<b>Tissue Specificity</b>	Expressed in brain, heart, kidney, liver, lung, pancreas, placenta, and skeletal muscle.
<b>Function</b>	disease:Defects in SLC7A10 may be involved in cystinuria (CSNU) which arises from impaired transport of cystine and dibasic amino acids through the epithelial cells of the renal tubule and gastrointestinal tract. Three types of cystinuria have been described.,function:Sodium-independent, high affinity transport of small neutral D- and L-amino acids. May play a role in the modulation of glutamatergic transmission through mobilization of D-serine at the glutamatergic synapse.,similarity:Belongs to the amino acid-polyamine-organocation (APC) superfamily.,subunit:Disulfide-linked heterodimer with the amino acid transport protein SLC3A2/4F2hc.,tissue specificity:Expressed in brain, heart, kidney, liver, lung, pancreas, placenta, and skeletal muscle.,
<b>Background</b>	SLC7A10, in association with 4F2HC (SLC3A2; MIM 158070), mediates high-affinity transport of D-serine and several other neutral amino acids (Nakauchi et al., 2000 [PubMed 10863037]).[supplied by OMIM, Mar 2008],



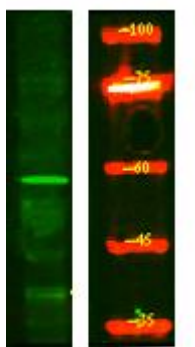
**matters needing attention**

Avoid repeated freezing and thawing!

**Usage suggestions**

This product can be used in immunological reaction related experiments. For more information, please consult technical personnel.

**Products Images**



Western Blot analysis of various cells using AAA1 Monoclonal Antibody