

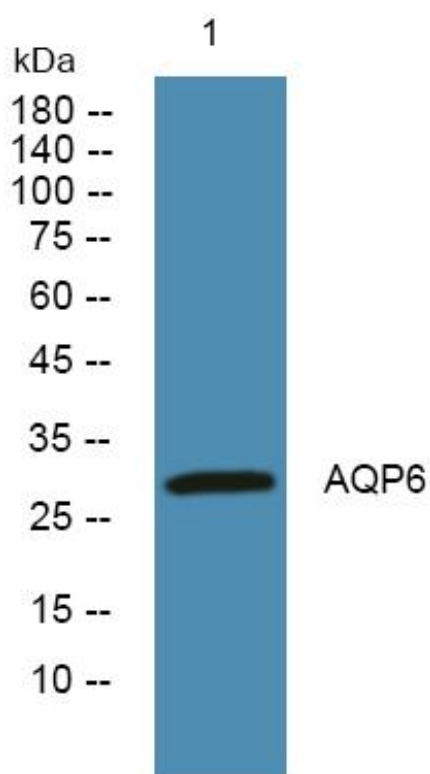


# AQP6 Monoclonal Antibody

<b>Catalog No</b>	YP-mAb-05329
<b>Isotype</b>	IgG
<b>Reactivity</b>	Human;Rat;Mouse;
<b>Applications</b>	WB
<b>Gene Name</b>	AQP6 AQP2L
<b>Protein Name</b>	Aquaporin-6 (AQP-6) (Aquaporin-2-like) (Kidney-specific aquaporin) (hKID)
<b>Immunogen</b>	Synthesized peptide derived from human protein . at AA range: 60-140
<b>Specificity</b>	AQP6 Monoclonal Antibody detects endogenous levels of protein.
<b>Formulation</b>	Liquid in PBS containing 50% glycerol, and 0.02% sodium azide.
<b>Source</b>	Monoclonal, Mouse,IgG
<b>Purification</b>	The antibody was affinity-purified from mouse antiserum by affinity-chromatography using epitope-specific immunogen.
<b>Dilution</b>	WB 1:500-1:2000
<b>Concentration</b>	1 mg/ml
<b>Purity</b>	≥90%
<b>Storage Stability</b>	-20°C/1 year
<b>Synonyms</b>	
<b>Observed Band</b>	31kD
<b>Cell Pathway</b>	Cytoplasmic vesicle membrane ; Multi-pass membrane protein .
<b>Tissue Specificity</b>	Kidney,Testis,
<b>Function</b>	domain:Aquaporins contain two tandem repeats each containing three membrane-spanning domains and a pore-forming loop with the signature motif Asn-Pro-Ala (NPA).,function:Forms a water-specific channel that participates in distinct physiological functions such as glomerular filtration, tubular endocytosis and acid-base metabolism.,similarity:Belongs to the MIP/aquaporin (TC 1.A.8) family.,
<b>Background</b>	The protein encoded by this gene is an aquaporin protein, which functions as a water channel in cells. Aquaporins are a family of small integral membrane proteins related to the major intrinsic protein (MIP or AQP0). This protein is specific for the kidney. This gene and related family members AQP0, AQP2, and AQP5 reside in a cluster on chromosome 12q13. [provided by RefSeq, Jul 2008],
<b>matters needing attention</b>	Avoid repeated freezing and thawing!

**Usage suggestions**

This product can be used in immunological reaction related experiments. For more information, please consult technical personnel.

**Products Images**

Western Blot analysis of various cells using AQP6 Monoclonal Antibody