

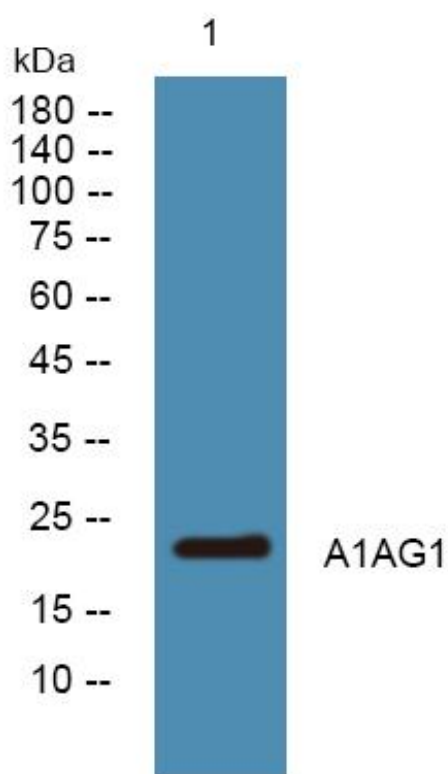


A1AG1 Monoclonal Antibody

Catalog No	YP-mAb-05305
Isotype	IgG
Reactivity	Human;Rat;Mouse;
Applications	WB
Gene Name	ORM1 AGP1
Protein Name	Alpha-1-acid glycoprotein 1 (AGP 1) (Orosomucoid-1) (OMD 1)
Immunogen	Synthesized peptide derived from human protein . at AA range: 30-110
Specificity	A1AG1 Monoclonal Antibody detects endogenous levels of protein.
Formulation	Liquid in PBS containing 50% glycerol, and 0.02% sodium azide.
Source	Monoclonal, Mouse,IgG
Purification	The antibody was affinity-purified from mouse antiserum by affinity-chromatography using epitope-specific immunogen.
Dilution	WB 1:500-1:2000
Concentration	1 mg/ml
Purity	≥90%
Storage Stability	-20°C/1 year
Synonyms	
Observed Band	22kD
Cell Pathway	Secreted.
Tissue Specificity	Expressed by the liver and secreted in plasma.
Function	function:Appears to function in modulating the activity of the immune system during the acute-phase reaction.,induction:Synthesis is controlled by glucocorticoids, interleukin-1 and interleukin-6, It increases 5- to 50-fold upon inflammation.,polymorphism:Three common alleles of ORM1 are known. ORM1*F1 has Gln-38/Val-174; ORM1*F2 has Gln-38/Met-174 and ORM1*S has Arg-38/Val-174. The sequence shown is that of allele ORM1*F1.,similarity:Belongs to the calycin superfamily. Lipocalin family.,tissue specificity:Expressed by the liver and secreted in plasma.,
Background	This gene encodes a key acute phase plasma protein. Because of its increase due to acute inflammation, this protein is classified as an acute-phase reactant. The specific function of this protein has not yet been determined; however, it may be involved in aspects of immunosuppression. [provided by RefSeq, Jul 2008],
matters needing attention	Avoid repeated freezing and thawing!

**Usage suggestions**

This product can be used in immunological reaction related experiments. For more information, please consult technical personnel.

Products Images

Western Blot analysis of various cells using A1AG1 Monoclonal Antibody