

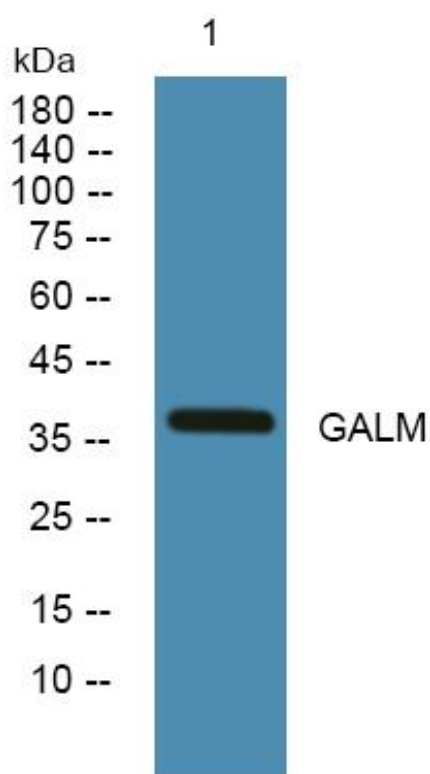


GALM Monoclonal Antibody

Catalog No	YP-mAb-05304
Isotype	IgG
Reactivity	Human;Mouse;Rat
Applications	WB
Gene Name	GALM BLOCK25
Protein Name	Aldose 1-epimerase (EC 5.1.3.3) (Galactose mutarotase)
Immunogen	Synthesized peptide derived from human protein . at AA range: 40-120
Specificity	GALM Monoclonal Antibody detects endogenous levels of protein.
Formulation	Liquid in PBS containing 50% glycerol, and 0.02% sodium azide.
Source	Monoclonal, Mouse,IgG
Purification	The antibody was affinity-purified from mouse antiserum by affinity-chromatography using epitope-specific immunogen.
Dilution	WB 1:500-1:2000
Concentration	1 mg/ml
Purity	≥90%
Storage Stability	-20°C/1 year
Synonyms	
Observed Band	37kD
Cell Pathway	Cytoplasm .
Tissue Specificity	Brain,Hematopoietic,Ovary,Skin,
Function	catalytic activity:Alpha-D-glucose = beta-D-glucose.,function:Mutarotase converts alpha-aldose to the beta-anomer. It is active on D-glucose, L-arabinose, D-xylose, D-galactose, maltose and lactose.,pathway:Carbohydrate metabolism; hexose metabolism.,similarity:Belongs to the aldose epimerase family.,subunit:Monomer.,
Background	This gene encodes an enzyme that catalyzes the epimerization of hexose sugars such as glucose and galactose. The encoded protein is expressed in the cytoplasm and has a preference for galactose. The encoded protein may be required for normal galactose metabolism by maintaining the equilibrium of alpha and beta anomers of galactose.[provided by RefSeq, Mar 2009],
matters needing attention	Avoid repeated freezing and thawing!

**Usage suggestions**

This product can be used in immunological reaction related experiments. For more information, please consult technical personnel.

Products Images

Western Blot analysis of various cells using GALM Monoclonal Antibody