

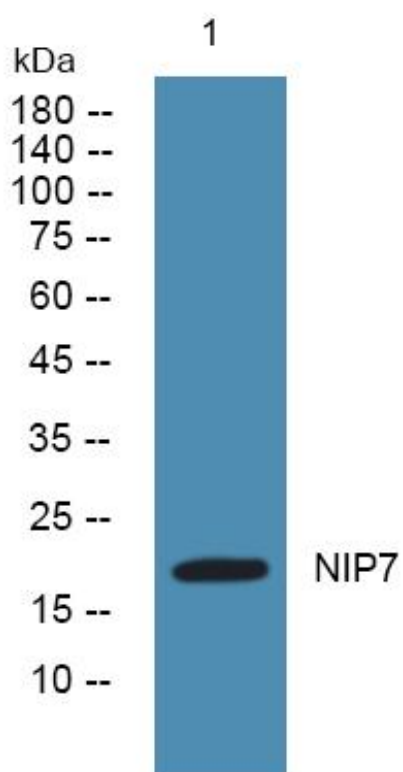


# NIP7 Monoclonal Antibody

<b>Catalog No</b>	YP-mAb-05258
<b>Isotype</b>	IgG
<b>Reactivity</b>	Human;Mouse;Rat
<b>Applications</b>	WB
<b>Gene Name</b>	NIP7 CGI-37 HSPC031 HSPC180 OK/SW-cl.76 OK/SW-cl.78
<b>Protein Name</b>	60S ribosome subunit biogenesis protein NIP7 homolog (KD93)
<b>Immunogen</b>	Synthesized peptide derived from human protein . at AA range: 90-170
<b>Specificity</b>	NIP7 Monoclonal Antibody detects endogenous levels of protein.
<b>Formulation</b>	Liquid in PBS containing 50% glycerol, and 0.02% sodium azide.
<b>Source</b>	Monoclonal, Mouse,IgG
<b>Purification</b>	The antibody was affinity-purified from mouse antiserum by affinity-chromatography using epitope-specific immunogen.
<b>Dilution</b>	WB 1:500-1:2000
<b>Concentration</b>	1 mg/ml
<b>Purity</b>	≥90%
<b>Storage Stability</b>	-20°C/1 year
<b>Synonyms</b>	
<b>Observed Band</b>	19kD
<b>Cell Pathway</b>	Nucleus, nucleolus .
<b>Tissue Specificity</b>	Expressed in hematopoietic stem/progenitor cells.
<b>Function</b>	function:Required for proper 27S pre-rRNA processing and 60S ribosome subunit assembly.,similarity:Belongs to the NIP7 family.,similarity:Contains 1 PUA domain.,subunit:Monomer. Interacts with pre-ribosome complex. May bind to RNA (By similarity). Interacts with NOL8. May interact with SBDS.,
<b>Background</b>	function:Required for proper 27S pre-rRNA processing and 60S ribosome subunit assembly.,similarity:Belongs to the NIP7 family.,similarity:Contains 1 PUA domain.,subunit:Monomer. Interacts with pre-ribosome complex. May bind to RNA (By similarity). Interacts with NOL8. May interact with SBDS.,
<b>matters needing attention</b>	Avoid repeated freezing and thawing!
<b>Usage suggestions</b>	This product can be used in immunological reaction related experiments. For more information, please consult technical personnel.



## Products Images



Western Blot analysis of various cells using NIP7  
Monoclonal Antibody