



PSD13 Monoclonal Antibody

Catalog No	YP-mAb-05216
Isotype	IgG
Reactivity	Human;Mouse;Rat
Applications	WB
Gene Name	PSMD13
Protein Name	26S proteasome non-ATPase regulatory subunit 13 (26S proteasome regulatory subunit RPN9) (26S proteasome regulatory subunit S11) (26S proteasome regulatory subunit p40.5)
Immunogen	Synthesized peptide derived from human protein . at AA range: 260-340
Specificity	PSD13 Monoclonal Antibody detects endogenous levels of protein.
Formulation	Liquid in PBS containing 50% glycerol, and 0.02% sodium azide.
Source	Monoclonal, Mouse,IgG
Purification	The antibody was affinity-purified from mouse antiserum by affinity-chromatography using epitope-specific immunogen.
Dilution	WB 1:500-1:2000
Concentration	1 mg/ml
Purity	≥90%
Storage Stability	-20°C/1 year
Synonyms	
Observed Band	41kD
Cell Pathway	proteasome complex,nucleus,nucleoplasm,cytosol,proteasome regulatory particle,proteasome regulatory particle, lid subcomplex,membrane,proteasome accessory complex,extracellular exosome,
Tissue Specificity	Brain,Kidney,Liver,Lung,Rectum tumor,
Function	function:Acts as a regulatory subunit of the 26S proteasome which is involved in the ATP-dependent degradation of ubiquitinated proteins.,similarity:Belongs to the proteasome subunit S11 family.,similarity:Contains 1 PCI domain.,subunit:Component of the PA700 complex.,
Background	The 26S proteasome is a multicatalytic proteinase complex with a highly ordered structure composed of 2 complexes, a 20S core and a 19S regulator. The 20S core is composed of 4 rings of 28 non-identical subunits; 2 rings are composed of 7 alpha subunits and 2 rings are composed of 7 beta subunits. The 19S regulator is composed of a base, which contains 6 ATPase subunits and 2 non-ATPase subunits, and a lid, which contains up to 10 non-ATPase subunits. Proteasomes are distributed throughout eukaryotic cells at a high concentration and cleave peptides in an ATP/ubiquitin-dependent process in a non-lysosomal pathway. An essential function of a modified proteasome, the immunoproteasome, is the



processing of class I MHC peptides. This gene encodes a non-ATPase subunit of the 19S regulator. Two transcripts encoding different isoforms have been described. [provided by RefSeq, Jul 2008],

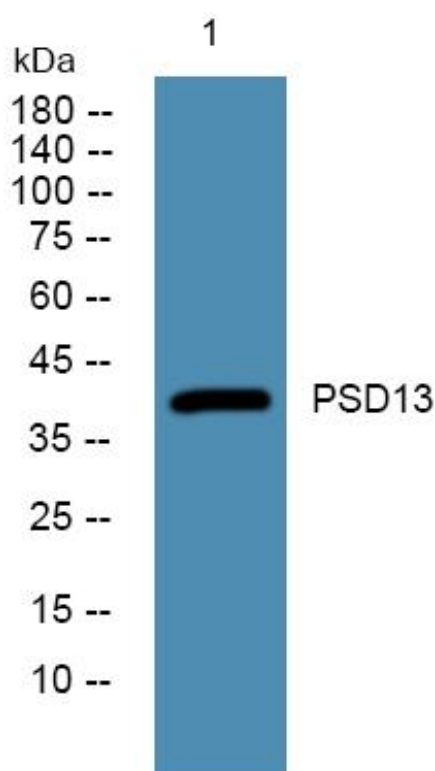
matters needing attention

Avoid repeated freezing and thawing!

Usage suggestions

This product can be used in immunological reaction related experiments. For more information, please consult technical personnel.

Products Images



Western Blot analysis of various cells using PSD13 Monoclonal Antibody