



ALKB2 Monoclonal Antibody

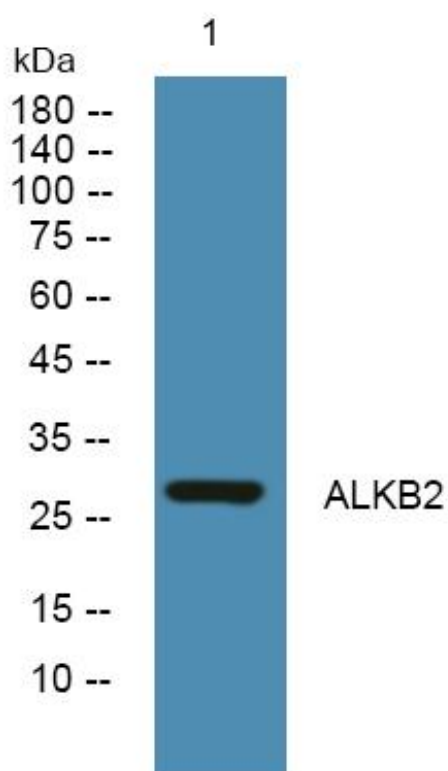
Catalog No	YP-mAb-05196
Isotype	IgG
Reactivity	Human;Mouse
Applications	WB
Gene Name	ALKBH2 ABH2
Protein Name	Alpha-ketoglutarate-dependent dioxygenase alkB homolog 2 (EC 1.14.11.33) (Alkylated DNA repair protein alkB homolog 2) (DNA oxidative demethylase ALKBH2) (Oxy DC1)
Immunogen	Synthesized peptide derived from human protein . at AA range: 140-220
Specificity	ALKB2 Monoclonal Antibody detects endogenous levels of protein.
Formulation	Liquid in PBS containing 50% glycerol, and 0.02% sodium azide.
Source	Monoclonal, Mouse,IgG
Purification	The antibody was affinity-purified from mouse antiserum by affinity-chromatography using epitope-specific immunogen.
Dilution	WB 1:500-1:2000
Concentration	1 mg/ml
Purity	≥90%
Storage Stability	-20°C/1 year
Synonyms	
Observed Band	28kD
Cell Pathway	Nucleus . Nucleus, nucleolus . Nucleus, nucleoplasm . Relocates to the replication foci during S-phase. .
Tissue Specificity	Detected in colon, small intestine, ovary, testis, prostate, skeletal muscle, heart, liver and urinary bladder.
Function	cofactor: Binds 1 Fe(2+) ion per subunit.,enzyme regulation: Activated by ascorbate.,function: Dioxygenase that repairs alkylated DNA and RNA containing 1-methyladenine and 3-methylcytosine by oxidative demethylation. Has strong preference for double-stranded DNA. Has low efficiency with single-stranded substrates. Requires molecular oxygen, alpha-ketoglutarate and iron.,similarity: Belongs to the alkB family.,subcellular location: Detected in replication foci during S-phase.,tissue specificity: Detected in colon, small intestine, ovary, testis, prostate, skeletal muscle, heart, liver and urinary bladder.,
Background	The Escherichia coli AlkB protein protects against the cytotoxicity of methylating agents by repair of the specific DNA lesions generated in single-stranded DNA. ALKBH2 and ALKBH3 (MIM 610603) are E. coli AlkB homologs that catalyze the removal of 1-methyladenine and 3-methylcytosine (Duncan et al., 2002 [PubMed 12486230]).[supplied by OMIM, Mar 2008],

**matters needing attention**

Avoid repeated freezing and thawing!

Usage suggestions

This product can be used in immunological reaction related experiments. For more information, please consult technical personnel.

Products Images

Western Blot analysis of various cells using ALKB2 Monoclonal Antibody