

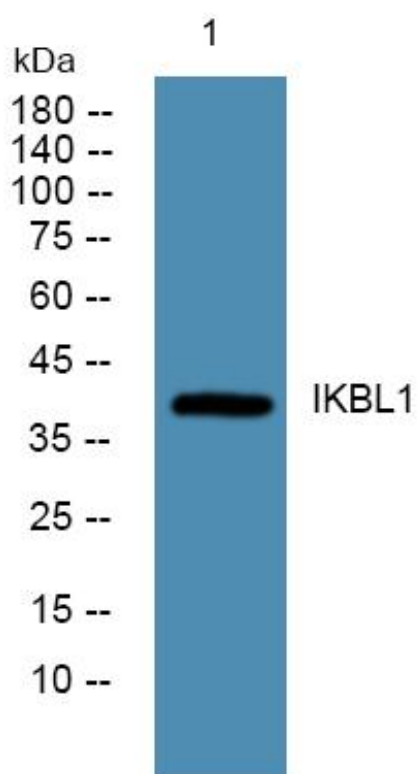


# IKBL1 Monoclonal Antibody

Catalog No	YP-mAb-05189
Isotype	IgG
Reactivity	Human;Mouse;Rat
Applications	WB
Gene Name	NFKBIL1 IKBL
Protein Name	NF-kappa-B inhibitor-like protein 1 (Inhibitor of kappa B-like protein) (I-kappa-B-like protein) (IkappaBL) (Nuclear factor of kappa light polypeptide gene enhancer in B-cells inhibitor-like 1)
Immunogen	Synthesized peptide derived from human protein . at AA range: 70-150
Specificity	IKBL1 Monoclonal Antibody detects endogenous levels of protein.
Formulation	Liquid in PBS containing 50% glycerol, and 0.02% sodium azide.
Source	Monoclonal, Mouse,IgG
Purification	The antibody was affinity-purified from mouse antiserum by affinity-chromatography using epitope-specific immunogen.
Dilution	WB 1:500-1:2000
Concentration	1 mg/ml
Purity	≥90%
Storage Stability	-20°C/1 year
Synonyms	
Observed Band	41kD
Cell Pathway	Nucleus . Nuclear localization with a speckled expression pattern in some cells. Colocalizes with CACTIN in the nucleus.
Tissue Specificity	Detected in different cell types including monocytes, T-cells, B-cells and hepatocytes.
Function	disease:Mutations in the promoter region of NFKBIL1 represent the second rheumatoid arthritis susceptibility locus within the HLA region [MIM:180300].,function:May be a negative regulator of NF-kappa-B activation.,similarity:Contains 2 ANK repeats.,tissue specificity:Detected in different cell types including monocytes, T-cells, B-cells and hepatocytes.,
Background	This gene encodes a divergent member of the I-kappa-B family of proteins. Its function has not been determined. The gene lies within the major histocompatibility complex (MHC) class I region on chromosome 6. Multiple transcript variants encoding different isoforms have been found for this gene. [provided by RefSeq, Jan 2009],
matters needing attention	Avoid repeated freezing and thawing!

**Usage suggestions**

This product can be used in immunological reaction related experiments. For more information, please consult technical personnel.

**Products Images**

Western Blot analysis of various cells using IKBL1 Monoclonal Antibody