



# WNT11 Monoclonal Antibody

<b>Catalog No</b>	YP-mAb-05158
<b>Isotype</b>	IgG
<b>Reactivity</b>	Human;Rat;Mouse;
<b>Applications</b>	WB
<b>Gene Name</b>	WNT11
<b>Protein Name</b>	Protein Wnt-11
<b>Immunogen</b>	Synthesized peptide derived from human protein . at AA range: 190-270
<b>Specificity</b>	WNT11 Monoclonal Antibody detects endogenous levels of protein.
<b>Formulation</b>	Liquid in PBS containing 50% glycerol, and 0.02% sodium azide.
<b>Source</b>	Monoclonal, Mouse,IgG
<b>Purification</b>	The antibody was affinity-purified from mouse antiserum by affinity-chromatography using epitope-specific immunogen.
<b>Dilution</b>	WB 1:500-1:2000
<b>Concentration</b>	1 mg/ml
<b>Purity</b>	≥90%
<b>Storage Stability</b>	-20°C/1 year
<b>Synonyms</b>	
<b>Observed Band</b>	38kD
<b>Cell Pathway</b>	Secreted, extracellular space, extracellular matrix.
<b>Tissue Specificity</b>	Expressed in fetal lung, kidney, adult heart, liver, skeletal muscle, and pancreas.
<b>Function</b>	function:Ligand for members of the frizzled family of seven transmembrane receptors.,function:Ligand for members of the frizzled family of seven transmembrane receptors. Probable developmental protein. May be a signaling molecule which affects the development of discrete regions of tissues. Is likely to signal over only few cell diameters.,similarity:Belongs to the Wnt family.,tissue specificity:Expressed in fetal lung, kidney, adult heart, liver, skeletal muscle, and pancreas.,
<b>Background</b>	The WNT gene family consists of structurally related genes which encode secreted signaling proteins. These proteins have been implicated in oncogenesis and in several developmental processes, including regulation of cell fate and patterning during embryogenesis. This gene is a member of the WNT gene family. It encodes a protein which shows 97%, 85%, and 63% amino acid identity with mouse, chicken, and Xenopus Wnt11 protein, respectively. This gene may play roles in the development of skeleton, kidney and lung, and is considered to be a plausible candidate gene for High Bone Mass Syndrome. [provided by RefSeq,



Jul 2008],

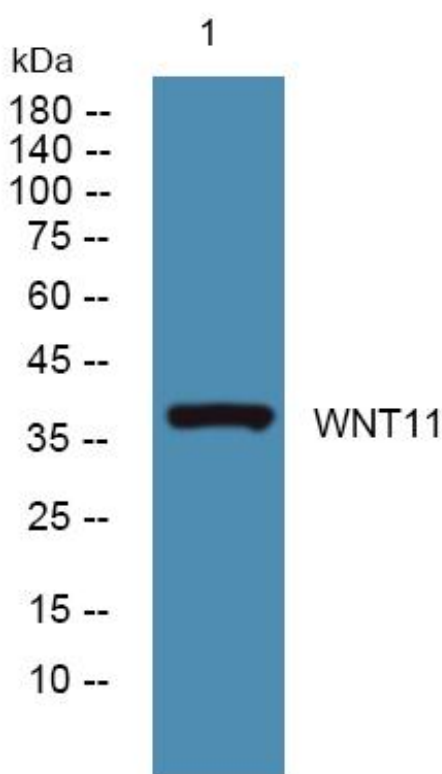
**matters needing attention**

Avoid repeated freezing and thawing!

**Usage suggestions**

This product can be used in immunological reaction related experiments. For more information, please consult technical personnel.

**Products Images**



Western Blot analysis of various cells using WNT11 Monoclonal Antibody