

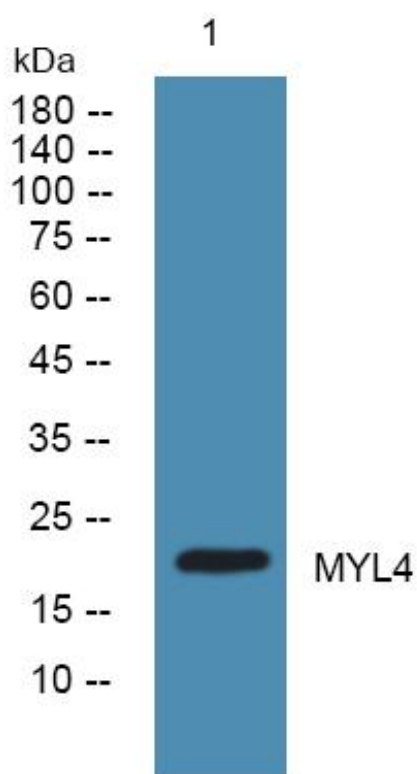


# MYL4 Monoclonal Antibody

<b>Catalog No</b>	YP-mAb-05139
<b>Isotype</b>	IgG
<b>Reactivity</b>	Human;Mouse;Rat
<b>Applications</b>	WB
<b>Gene Name</b>	MYL4 MLC1 PRO1957
<b>Protein Name</b>	Myosin light chain 4 (Myosin light chain 1, embryonic muscle/atrial isoform) (Myosin light chain alkali GT-1 isoform)
<b>Immunogen</b>	Synthesized peptide derived from human protein . at AA range: 1-80
<b>Specificity</b>	MYL4 Monoclonal Antibody detects endogenous levels of protein.
<b>Formulation</b>	Liquid in PBS containing 50% glycerol, and 0.02% sodium azide.
<b>Source</b>	Monoclonal, Mouse,IgG
<b>Purification</b>	The antibody was affinity-purified from mouse antiserum by affinity-chromatography using epitope-specific immunogen.
<b>Dilution</b>	WB 1:500-1:2000
<b>Concentration</b>	1 mg/ml
<b>Purity</b>	≥90%
<b>Storage Stability</b>	-20°C/1 year
<b>Synonyms</b>	
<b>Observed Band</b>	21kD
<b>Cell Pathway</b>	cytosol,myosin complex,A band,
<b>Tissue Specificity</b>	Blood,Fetal liver,Pancreas,Skeletal muscle,Spleen,
<b>Function</b>	function:Regulatory light chain of myosin. Does not bind calcium.,similarity:Contains 3 EF-hand domains.,subunit:Myosin is an hexamer of 2 heavy chains and 4 light chains.,
<b>Background</b>	Myosin is a hexameric ATPase cellular motor protein. It is composed of two myosin heavy chains, two nonphosphorylatable myosin alkali light chains, and two phosphorylatable myosin regulatory light chains. This gene encodes a myosin alkali light chain that is found in embryonic muscle and adult atria. Two alternatively spliced transcript variants encoding the same protein have been found for this gene. [provided by RefSeq, Jul 2008],
<b>matters needing attention</b>	Avoid repeated freezing and thawing!

**Usage suggestions**

This product can be used in immunological reaction related experiments. For more information, please consult technical personnel.

**Products Images**

Western Blot analysis of various cells using MYL4 Monoclonal Antibody