

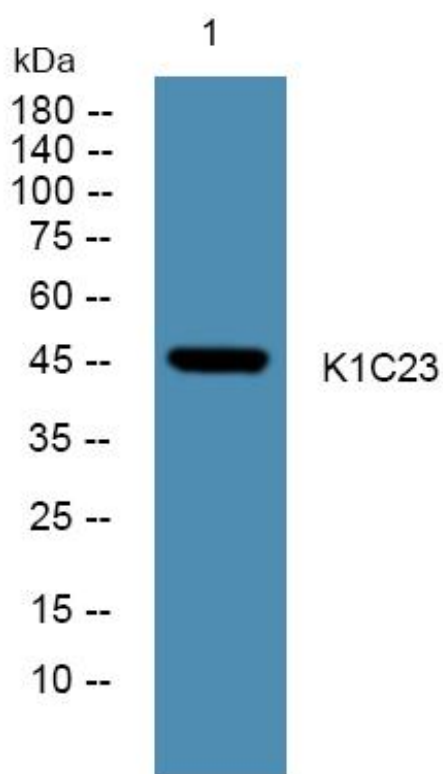


K1C23 Monoclonal Antibody

Catalog No	YP-mAb-05116
Isotype	IgG
Reactivity	Human;Rat;Mouse;
Applications	WB
Gene Name	KRT23
Protein Name	Keratin, type I cytoskeletal 23 (Cytokeratin-23) (CK-23) (Keratin-23) (K23)
Immunogen	Synthesized peptide derived from human protein . at AA range: 150-230
Specificity	K1C23 Monoclonal Antibody detects endogenous levels of protein.
Formulation	Liquid in PBS containing 50% glycerol, and 0.02% sodium azide.
Source	Monoclonal, Mouse,IgG
Purification	The antibody was affinity-purified from mouse antiserum by affinity-chromatography using epitope-specific immunogen.
Dilution	WB 1:500-1:2000
Concentration	1 mg/ml
Purity	≥90%
Storage Stability	-20°C/1 year
Synonyms	
Observed Band	46kD
Cell Pathway	intermediate filament,
Tissue Specificity	Placenta,Testis,Urinary bladder,
Function	miscellaneous:There are two types of cytoskeletal and microfibrillar keratin: I (acidic; 40-55 kDa) and II (neutral to basic; 56-70 kDa).,similarity:Belongs to the intermediate filament family.,subunit:Heterotetramer of two type I and two type II keratins.,
Background	The protein encoded by this gene is a member of the keratin family. The keratins are intermediate filament proteins responsible for the structural integrity of epithelial cells and are subdivided into cytokeratins and hair keratins. The type I cytokeratins consist of acidic proteins which are arranged in pairs of heterotypic keratin chains. The type I cytokeratin genes are clustered in a region of chromosome 17q12-q21. Alternative splicing results in multiple transcript variants. [provided by RefSeq, Sep 2013],
matters needing attention	Avoid repeated freezing and thawing!

**Usage suggestions**

This product can be used in immunological reaction related experiments. For more information, please consult technical personnel.

Products Images

Western Blot analysis of various cells using K1C23 Monoclonal Antibody