

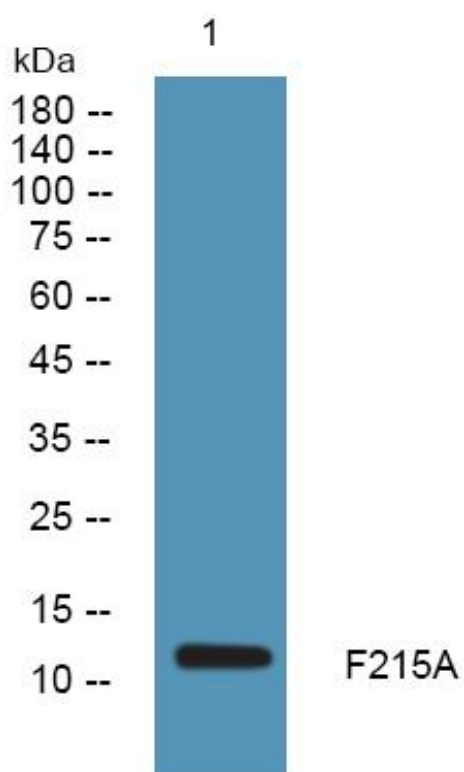


# F215A Monoclonal Antibody

<b>Catalog No</b>	YP-mAb-05049
<b>Isotype</b>	IgG
<b>Reactivity</b>	Human;Rat;Mouse;
<b>Applications</b>	WB
<b>Gene Name</b>	FAM215A APR2 C17orf88
<b>Protein Name</b>	Putative protein FAM215A (Putative apoptosis-related protein 2) (APR-2)
<b>Immunogen</b>	Synthesized peptide derived from human protein . at AA range: 30-110
<b>Specificity</b>	F215A Monoclonal Antibody detects endogenous levels of protein.
<b>Formulation</b>	Liquid in PBS containing 50% glycerol, and 0.02% sodium azide.
<b>Source</b>	Monoclonal, Mouse,IgG
<b>Purification</b>	The antibody was affinity-purified from mouse antiserum by affinity-chromatography using epitope-specific immunogen.
<b>Dilution</b>	WB 1:500-1:2000
<b>Concentration</b>	1 mg/ml
<b>Purity</b>	≥90%
<b>Storage Stability</b>	-20°C/1 year
<b>Synonyms</b>	
<b>Observed Band</b>	12kD
<b>Cell Pathway</b>	
<b>Tissue Specificity</b>	
<b>Function</b>	apoptosis, cell death, programmed cell death, death,
<b>Background</b>	FAM215A (Family With Sequence Similarity 215 Member A (Non-Protein Coding)) is an RNA Gene, and is affiliated with the non-coding RNA class. It is a Mouse Monoclonal antibody to 6D11 to C17orf88, APR-2, FAM215A, family with sequence similarity 215, member A (non-protein coding), LINC00530. This antibody recognizes Human antigen.
<b>matters needing attention</b>	Avoid repeated freezing and thawing!
<b>Usage suggestions</b>	This product can be used in immunological reaction related experiments. For more information, please consult technical personnel.



## Products Images



Western Blot analysis of various cells using F215A Monoclonal Antibody