

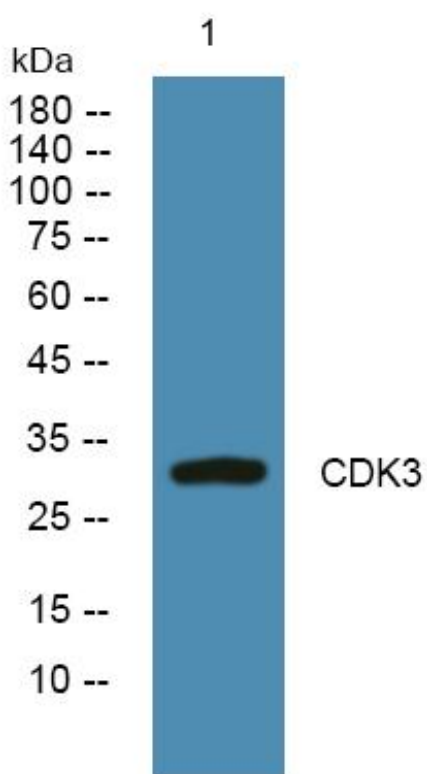


CDK3 Monoclonal Antibody

Catalog No	YP-mAb-05047
Isotype	IgG
Reactivity	Human;Mouse
Applications	WB
Gene Name	CDK3 CDKN3
Protein Name	Cyclin-dependent kinase 3 (EC 2.7.11.22) (Cell division protein kinase 3)
Immunogen	Synthesized peptide derived from human protein . at AA range: 10-90
Specificity	CDK3 Monoclonal Antibody detects endogenous levels of protein.
Formulation	Liquid in PBS containing 50% glycerol, and 0.02% sodium azide.
Source	Monoclonal, Mouse,IgG
Purification	The antibody was affinity-purified from mouse antiserum by affinity-chromatography using epitope-specific immunogen.
Dilution	WB 1:500-1:2000
Concentration	1 mg/ml
Purity	≥90%
Storage Stability	-20°C/1 year
Synonyms	
Observed Band	33kD
Cell Pathway	
Tissue Specificity	Expressed in cancer cell lines and glioblastoma tissue.
Function	catalytic activity:ATP + a protein = ADP + a phosphoprotein.,function:Probably involved in the control of the cell cycle. Interacts with a yet unknown type of cyclin. Can phosphorylate histone H1.,similarity:Belongs to the protein kinase superfamily. CMGC Ser/Thr protein kinase family. CDC2/CDKX subfamily.,similarity:Contains 1 protein kinase domain.,subunit:Interacts with CABLES1.,
Background	cyclin dependent kinase 3(CDK3) Homo sapiens This gene encodes a member of the cyclin-dependent protein kinase family. The protein promotes entry into S phase, in part by activating members of the E2F family of transcription factors. The protein also associates with cyclin C and phosphorylates the retinoblastoma 1 protein to promote exit from G0. [provided by RefSeq, Jul 2008],
matters needing attention	Avoid repeated freezing and thawing!

**Usage suggestions**

This product can be used in immunological reaction related experiments. For more information, please consult technical personnel.

Products Images

Western Blot analysis of various cells using CDK3 Monoclonal Antibody