

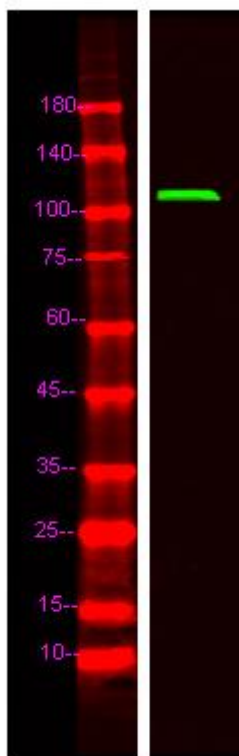


TR150 Monoclonal Antibody

Catalog No	YP-mAb-05037
Isotype	IgG
Reactivity	Human;Mouse;Rat
Applications	WB
Gene Name	THRAP3 TRAP150
Protein Name	Thyroid hormone receptor-associated protein 3 (Thyroid hormone receptor-associated protein complex 150 kDa component) (Trap150)
Immunogen	Synthesized peptide derived from human protein . at AA range: 110-190
Specificity	TR150 Monoclonal Antibody detects endogenous levels of protein.
Formulation	Liquid in PBS containing 50% glycerol, and 0.02% sodium azide.
Source	Monoclonal, Mouse,IgG
Purification	The antibody was affinity-purified from mouse antiserum by affinity-chromatography using epitope-specific immunogen.
Dilution	WB 1:500-1:2000
Concentration	1 mg/ml
Purity	≥90%
Storage Stability	-20°C/1 year
Synonyms	
Observed Band	105kD
Cell Pathway	Nucleus . Nucleus, nucleoplasm . Nucleus speckle .
Tissue Specificity	Ubiquitous.
Function	function:Plays a role in transcriptional coactivation.,PTM:Phosphorylated upon DNA damage, probably by ATM or ATR.,sequence caution:Contaminating sequence. Potential poly-A sequence.,subunit:Subunit of the large multiprotein complex TRAP.,tissue specificity:Ubiquitous.,
Background	function:Plays a role in transcriptional coactivation.,PTM:Phosphorylated upon DNA damage, probably by ATM or ATR.,sequence caution:Contaminating sequence. Potential poly-A sequence.,subunit:Subunit of the large multiprotein complex TRAP.,tissue specificity:Ubiquitous.,
matters needing attention	Avoid repeated freezing and thawing!
Usage suggestions	This product can be used in immunological reaction related experiments. For more information, please consult technical personnel.



Products Images



Western Blot analysis of various cells using TR150 Monoclonal Antibody