

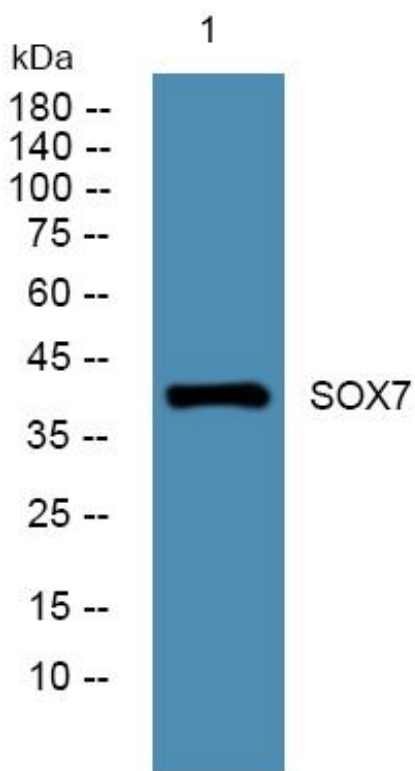


# SOX7 Monoclonal Antibody

<b>Catalog No</b>	YP-mAb-05019
<b>Isotype</b>	IgG
<b>Reactivity</b>	Human;Mouse
<b>Applications</b>	WB
<b>Gene Name</b>	SOX7
<b>Protein Name</b>	Transcription factor SOX-7
<b>Immunogen</b>	Synthesized peptide derived from part region of human protein
<b>Specificity</b>	SOX7 Monoclonal Antibody detects endogenous levels of protein.
<b>Formulation</b>	Liquid in PBS containing 50% glycerol, and 0.02% sodium azide.
<b>Source</b>	Monoclonal, Mouse,IgG
<b>Purification</b>	The antibody was affinity-purified from mouse antiserum by affinity-chromatography using epitope-specific immunogen.
<b>Dilution</b>	WB 1:500-1:2000
<b>Concentration</b>	1 mg/ml
<b>Purity</b>	≥90%
<b>Storage Stability</b>	-20°C/1 year
<b>Synonyms</b>	
<b>Observed Band</b>	42kD
<b>Cell Pathway</b>	Nucleus . Cytoplasm .
<b>Tissue Specificity</b>	Widely expressed in adult and fetal tissues. Present both in mesenchymal and epithelial cells in some adult tissues, including colon. Tends to be down-regulated in prostate adenocarcinomas and colorectal tumors due to promoter hypermethylation.
<b>Function</b>	function:Transcriptional repressor. Binds to the DNA sequence 5'-AACAAT-3',similarity:Contains 1 HMG box DNA-binding domain.,
<b>Background</b>	SRY-box 7(SOX7) Homo sapiens This gene encodes a member of the SOX (SRY-related HMG-box) family of transcription factors involved in the regulation of embryonic development and in the determination of the cell fate. The encoded protein may act as a transcriptional regulator after forming a protein complex with other proteins. The protein may play a role in tumorigenesis. A similar protein in mice is involved in the regulation of the wingless-type MMTV integration site family (Wnt) pathway. [provided by RefSeq, Jul 2008],
<b>matters needing attention</b>	Avoid repeated freezing and thawing!

**Usage suggestions**

This product can be used in immunological reaction related experiments. For more information, please consult technical personnel.

**Products Images**

Western Blot analysis of various cells using SOX7 Monoclonal Antibody