



PCBP2 Monoclonal Antibody

Catalog No	YP-mAb-04995
Isotype	IgG
Reactivity	Human;Mouse
Applications	WB
Gene Name	PCBP2
Protein Name	Poly(rC)-binding protein 2 (Alpha-CP2) (Heterogeneous nuclear ribonucleoprotein E2) (hnRNP E2)
Immunogen	Synthesized peptide derived from human protein . at AA range: 30-110
Specificity	PCBP2 Monoclonal Antibody detects endogenous levels of protein.
Formulation	Liquid in PBS containing 50% glycerol, and 0.02% sodium azide.
Source	Monoclonal, Mouse,IgG
Purification	The antibody was affinity-purified from mouse antiserum by affinity-chromatography using epitope-specific immunogen.
Dilution	WB 1:500-1:2000
Concentration	1 mg/ml
Purity	≥90%
Storage Stability	-20°C/1 year
Synonyms	
Observed Band	40kD
Cell Pathway	Nucleus . Cytoplasm . Loosely bound in the nucleus. May shuttle between the nucleus and the cytoplasm.
Tissue Specificity	Detected in all tissues examined.
Function	function:Major cellular poly(rC)-binding protein. Binds also poly(rU).,PTM:Phosphorylated. The non-phosphorylated form(s) exhibited the strongest poly(rC)-binding activity.,similarity:Contains 3 KH domains.,subcellular location:Loosely bound in the nucleus. May shuttle between the nucleus and the cytoplasm.,tissue specificity:Detected in all tissues examined.,
Background	The protein encoded by this gene appears to be multifunctional. Along with PCBP-1 and hnRNPK, it is one of the major cellular poly(rC)-binding proteins. The encoded protein contains three K-homologous (KH) domains which may be involved in RNA binding. Together with PCBP-1, this protein also functions as a translational coactivator of poliovirus RNA via a sequence-specific interaction with stem-loop IV of the IRES, promoting poliovirus RNA replication by binding to its 5'-terminal cloverleaf structure. It has also been implicated in translational control of the 15-lipoxygenase mRNA, human papillomavirus type 16 L2 mRNA, and hepatitis A virus RNA. The encoded protein is also suggested to play a part in formation of a sequence-specific alpha-globin mRNP complex which is associated



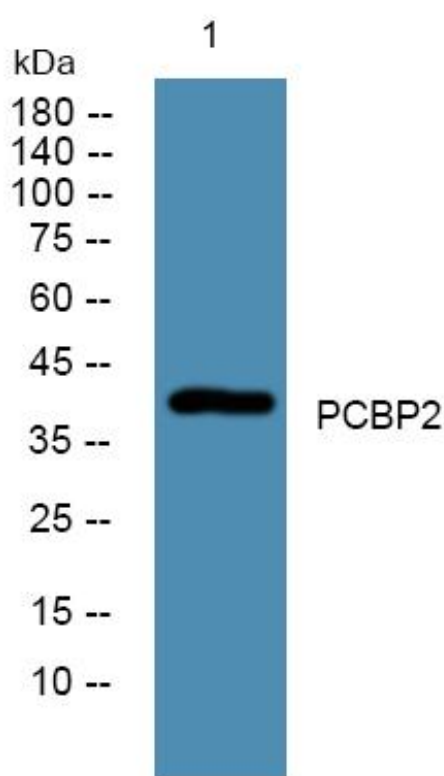
with alpha-globin mRNA stability. This multiexon structural mRNA is thought to be retrotransposed to generate

matters needing attention

Avoid repeated freezing and thawing!

Usage suggestions

This product can be used in immunological reaction related experiments. For more information, please consult technical personnel.

Products Images

Western Blot analysis of various cells using PCBP2 Monoclonal Antibody