



# MAPK Organizer 1 Monoclonal Antibody

<b>Catalog No</b>	YP-mAb-04339
<b>Isotype</b>	IgG
<b>Reactivity</b>	Human;Mouse;Rat
<b>Applications</b>	WB
<b>Gene Name</b>	WDR83
<b>Protein Name</b>	WD repeat domain-containing protein 83
<b>Immunogen</b>	The antiserum was produced against synthesized peptide derived from the Internal region of human WDR83. AA range:141-190
<b>Specificity</b>	MAPK Organizer 1 Monoclonal Antibody detects endogenous levels of MAPK Organizer 1 protein.
<b>Formulation</b>	Liquid in PBS containing 50% glycerol, 0.5% BSA and 0.02% sodium azide.
<b>Source</b>	Monoclonal, Mouse,IgG
<b>Purification</b>	The antibody was affinity-purified from mouse antiserum by affinity-chromatography using epitope-specific immunogen.
<b>Dilution</b>	WB 1:500-1:2000
<b>Concentration</b>	1 mg/ml
<b>Purity</b>	≥90%
<b>Storage Stability</b>	-20°C/1 year
<b>Synonyms</b>	WDR83; MORG1; WD repeat domain-containing protein 83; Mitogen-activated protein kinase organizer 1; MAPK organizer 1
<b>Observed Band</b>	34kD
<b>Cell Pathway</b>	Cytoplasm . Nucleus . Predominantly cytoplasmic. Partially nuclear. .
<b>Tissue Specificity</b>	Kidney proximal tubule,Muscle,
<b>Function</b>	function:Molecular scaffold protein for various multimeric protein complexes. Acts as a module in the assembly of a multicomponent scaffold for the ERK pathway, linking ERK responses to specific agonists. At low concentrations it enhances ERK activation, whereas high concentrations lead to the inhibition of ERK activation. Also involved in response to hypoxia by acting as a negative regulator of HIF1A/HIF-1-alpha via its interaction with EGLN3/PHD3. May promote degradation of HIF1A. May act by recruiting signaling complexes to a specific upstream activator (By similarity). May also be involved in pre-mRNA splicing.,similarity:Belongs to the WD repeat MORG1 family.,similarity:Contains 7 WD repeats.,subcellular location:Predominantly cytoplasmic (By similarity). Partially nuclear.,subunit:Interacts with EGLN3/PHD3. Interacts with ERK signaling proteins MAP2K1/MEK1, MAP2K2/MEK2, MAP2K1IP1/M



## Background

This gene encodes a member of the WD-40 protein family. The protein is proposed to function as a molecular scaffold for various multimeric protein complexes. The protein associates with several components of the extracellular signal-regulated kinase (ERK) pathway, and promotes ERK activity in response to serum or other signals. The protein also interacts with egl nine homolog 3 (EGLN3, also known as PHD3) and regulates expression of hypoxia-inducible factor 1, and has been purified as part of the spliceosome. Alternative splicing results in multiple transcript variants. [provided by RefSeq, Oct 2009],

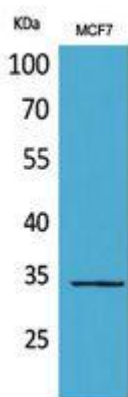
## matters needing attention

Avoid repeated freezing and thawing!

## Usage suggestions

This product can be used in immunological reaction related experiments. For more information, please consult technical personnel.

## Products Images



Western Blot analysis of various cells using MAPK Organizer 1 Monoclonal Antibody