



# NTCP Monoclonal Antibody

<b>Catalog No</b>	YP-mAb-04332
<b>Isotype</b>	IgG
<b>Reactivity</b>	Human;Rat;Mouse;
<b>Applications</b>	WB
<b>Gene Name</b>	SLC10A1
<b>Protein Name</b>	Sodium/bile acid cotransporter
<b>Immunogen</b>	The antiserum was produced against synthesized peptide derived from the C-terminal region of human SLC10A1. AA range:281-330
<b>Specificity</b>	NTCP Monoclonal Antibody detects endogenous levels of NTCP protein.
<b>Formulation</b>	Liquid in PBS containing 50% glycerol, 0.5% BSA and 0.02% sodium azide.
<b>Source</b>	Monoclonal, Mouse,IgG
<b>Purification</b>	The antibody was affinity-purified from mouse antiserum by affinity-chromatography using epitope-specific immunogen.
<b>Dilution</b>	WB 1:500-1:2000
<b>Concentration</b>	1 mg/ml
<b>Purity</b>	≥90%
<b>Storage Stability</b>	-20°C/1 year
<b>Synonyms</b>	SLC10A1; NTCP; GIG29; Sodium/bile acid cotransporter; Cell growth-inhibiting gene 29 protein; Na(+)/bile acid cotransporter; Na(+)/taurocholate transport protein; Sodium/taurocholate cotransporting polypeptide; Solute carrier family 10 member 1
<b>Observed Band</b>	38kD
<b>Cell Pathway</b>	Cell membrane ; Multi-pass membrane protein.
<b>Tissue Specificity</b>	Brain,Liver,
<b>Function</b>	function:The hepatic sodium/bile acid uptake system exhibits broad substrate specificity and transports various non-bile acid organic compounds as well. It is strictly dependent on the extracellular presence of sodium.,similarity:Belongs to the sodium:bile acid symporter family.,
<b>Background</b>	The protein encoded by this gene belongs to the sodium/bile acid cotransporter family, which are integral membrane glycoproteins that participate in the enterohepatic circulation of bile acids. Two homologous transporters are involved in the reabsorption of bile acids; the ileal sodium/bile acid cotransporter with an apical cell localization that absorbs bile acids from the intestinal lumen, bile duct and kidney, and the liver-specific sodium/bile acid cotransporter, represented by this protein, that is found in the basolateral membranes of hepatocytes. Bile acids



are the catabolic product of cholesterol metabolism, hence this protein is important for cholesterol homeostasis. [provided by RefSeq, Oct 2011],

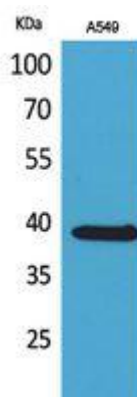
**matters needing attention**

Avoid repeated freezing and thawing!

**Usage suggestions**

This product can be used in immunological reaction related experiments. For more information, please consult technical personnel.

## Products Images



Western Blot analysis of various cells using NTCP Monoclonal Antibody