



# TIGD3 Monoclonal Antibody

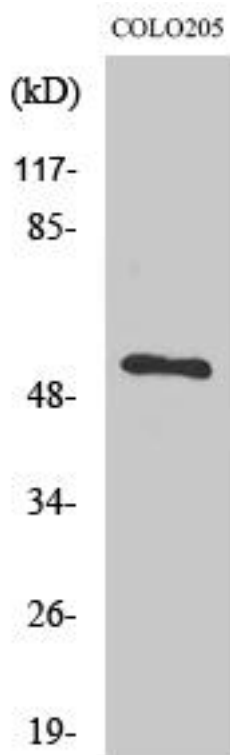
<b>Catalog No</b>	YP-mAb-04243
<b>Isotype</b>	IgG
<b>Reactivity</b>	Human;Rat;Mouse;
<b>Applications</b>	WB
<b>Gene Name</b>	TIGD3
<b>Protein Name</b>	Tigger transposable element-derived protein 3
<b>Immunogen</b>	The antiserum was produced against synthesized peptide derived from human TIGD3. AA range:381-430
<b>Specificity</b>	TIGD3 Monoclonal Antibody detects endogenous levels of TIGD3 protein.
<b>Formulation</b>	Liquid in PBS containing 50% glycerol, 0.5% BSA and 0.02% sodium azide.
<b>Source</b>	Monoclonal, Mouse,IgG
<b>Purification</b>	The antibody was affinity-purified from mouse antiserum by affinity-chromatography using epitope-specific immunogen.
<b>Dilution</b>	WB 1:500-1:2000
<b>Concentration</b>	1 mg/ml
<b>Purity</b>	≥90%
<b>Storage Stability</b>	-20°C/1 year
<b>Synonyms</b>	TIGD3; Tigger transposable element-derived protein 3
<b>Observed Band</b>	55kD
<b>Cell Pathway</b>	Nucleus .
<b>Tissue Specificity</b>	Lung,
<b>Function</b>	similarity:Belongs to the tigger transposable element derived protein family.,similarity:Contains 1 DDE domain.,similarity:Contains 1 HTH CENPB-type DNA-binding domain.,similarity:Contains 1 HTH psq-type DNA-binding domain.,
<b>Background</b>	The protein encoded by this gene belongs to the tigger subfamily of the pogo superfamily of DNA-mediated transposons in humans. These proteins are related to DNA transposons found in fungi and nematodes, and more distantly to the Tc1 and mariner transposases. They are also very similar to the major mammalian centromere protein B. The exact function of this gene is not known. [provided by RefSeq, Jul 2008],
<b>matters needing attention</b>	Avoid repeated freezing and thawing!



### Usage suggestions

This product can be used in immunological reaction related experiments. For more information, please consult technical personnel.

### Products Images



Western Blot analysis of various cells using TIGD3 Monoclonal Antibody