



# TCFL5 Monoclonal Antibody

<b>Catalog No</b>	YP-mAb-04239
<b>Isotype</b>	IgG
<b>Reactivity</b>	Human;Mouse
<b>Applications</b>	WB
<b>Gene Name</b>	TCFL5
<b>Protein Name</b>	Transcription factor-like 5 protein
<b>Immunogen</b>	The antiserum was produced against synthesized peptide derived from human TCFL5. AA range:311-360
<b>Specificity</b>	TCFL5 Monoclonal Antibody detects endogenous levels of TCFL5 protein.
<b>Formulation</b>	Liquid in PBS containing 50% glycerol, 0.5% BSA and 0.02% sodium azide.
<b>Source</b>	Monoclonal, Mouse,IgG
<b>Purification</b>	The antibody was affinity-purified from mouse antiserum by affinity-chromatography using epitope-specific immunogen.
<b>Dilution</b>	WB 1:500-1:2000
<b>Concentration</b>	1 mg/ml
<b>Purity</b>	≥90%
<b>Storage Stability</b>	-20°C/1 year
<b>Synonyms</b>	TCFL5; CHA; E2BP1; Transcription factor-like 5 protein; Cha transcription factor; HPV-16 E2-binding protein 1; E2BP-1
<b>Observed Band</b>	48kD
<b>Cell Pathway</b>	Nucleus .
<b>Tissue Specificity</b>	Isoform 3 is testis specific. Isoform 2 is pancreas specific.
<b>Function</b>	developmental stage:Isoform 3 is specifically expressed in primary spermatocytes at the pachytene stage, but not those at leptotema stage. Not expressed in other testicular cells, including spermatogonia located in the basal compartment of the seminiferous tubule or spermatids.,disease:Antibodies against TCFL5 are present in sera from patients with Chagas' disease, an autoimmune disease caused by Trypanosoma cruzi. Two different epitopes that mimic Trypanosoma cruzi antigens have been identified: R1 and R3 epitopes, which are recognized by T- and B-cells, respectively.,function:Putative transcription factor. Isoform 3 may play a role in early spermatogenesis.,similarity:Contains 1 basic helix-loop-helix (bHLH) domain.,subunit:Efficient DNA binding requires dimerization with another bHLH protein.,tissue specificity:Isoform 3 is testis specific. Isoform 2 is pancreas specific.,



## Background

developmental stage:Isoform 3 is specifically expressed in primary spermatocytes at the pachytene stage, but not those at leptotema stage. Not expressed in other testicular cells, including spermatogonia located in the basal compartment of the seminiferous tubule or spermatids.,disease:Antibodies against TCFL5 are present in sera from patients with Chagas' disease, an autoimmune disease caused by Trypanosoma cruzi. Two different epitopes that mimic Trypanosoma cruzi antigens have been identified: R1 and R3 epitopes, which are recognized by T- and B-cells, respectively.,function:Putative transcription factor. Isoform 3 may play a role in early spermatogenesis.,similarity:Contains 1 basic helix-loop-helix (bHLH) domain.,subunit:Efficient DNA binding requires dimerization with another bHLH protein.,tissue specificity:Isoform 3 is testis specific. Isoform 2 is pancreas specific.,

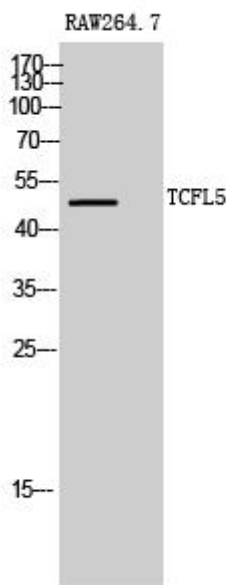
## matters needing attention

Avoid repeated freezing and thawing!

## Usage suggestions

This product can be used in immunological reaction related experiments. For more information, please consult technical personnel.

## Products Images



Western Blot analysis of various cells using TCFL5 Monoclonal Antibody