



# TAFI Monoclonal Antibody

<b>Catalog No</b>	YP-mAb-04236
<b>Isotype</b>	IgG
<b>Reactivity</b>	Human;Rat;Mouse;
<b>Applications</b>	WB
<b>Gene Name</b>	CPB2
<b>Protein Name</b>	Carboxypeptidase B2
<b>Immunogen</b>	The antiserum was produced against synthesized peptide derived from human CPB2. AA range:321-370
<b>Specificity</b>	TAFI Monoclonal Antibody detects endogenous levels of TAFI protein.
<b>Formulation</b>	Liquid in PBS containing 50% glycerol, 0.5% BSA and 0.02% sodium azide.
<b>Source</b>	Monoclonal, Mouse,IgG
<b>Purification</b>	The antibody was affinity-purified from mouse antiserum by affinity-chromatography using epitope-specific immunogen.
<b>Dilution</b>	WB 1:500-1:2000
<b>Concentration</b>	1 mg/ml
<b>Purity</b>	≥90%
<b>Storage Stability</b>	-20°C/1 year
<b>Synonyms</b>	CPB2; Carboxypeptidase B2; Carboxypeptidase U; CPU; Plasma carboxypeptidase B; pCPB; Thrombin-activable fibrinolysis inhibitor; TAFI
<b>Observed Band</b>	48kD
<b>Cell Pathway</b>	Secreted.
<b>Tissue Specificity</b>	Plasma; synthesized in the liver.
<b>Function</b>	catalytic activity:Release of C-terminal Arg and Lys from a polypeptide.,cofactor:Binds 1 zinc ion per subunit.,function:Cleaves C-terminal arginine or lysine residues from biologically active peptides such as kinins or anaphylatoxins in the circulation thereby regulating their activities.,similarity:Belongs to the peptidase M14 family.,tissue specificity:Plasma; synthesized in the liver.,
<b>Background</b>	Carboxypeptidases are enzymes that hydrolyze C-terminal peptide bonds. The carboxypeptidase family includes metallo-, serine, and cysteine carboxypeptidases. According to their substrate specificity, these enzymes are referred to as carboxypeptidase A (cleaving aliphatic residues) or carboxypeptidase B (cleaving basic amino residues). The protein encoded by this gene is activated by trypsin and acts on carboxypeptidase B substrates. After thrombin activation, the mature protein downregulates fibrinolysis. Polymorphisms have been described for this gene and its promoter region. Alternate splicing



results in multiple transcript variants. [provided by RefSeq, Jun 2013],

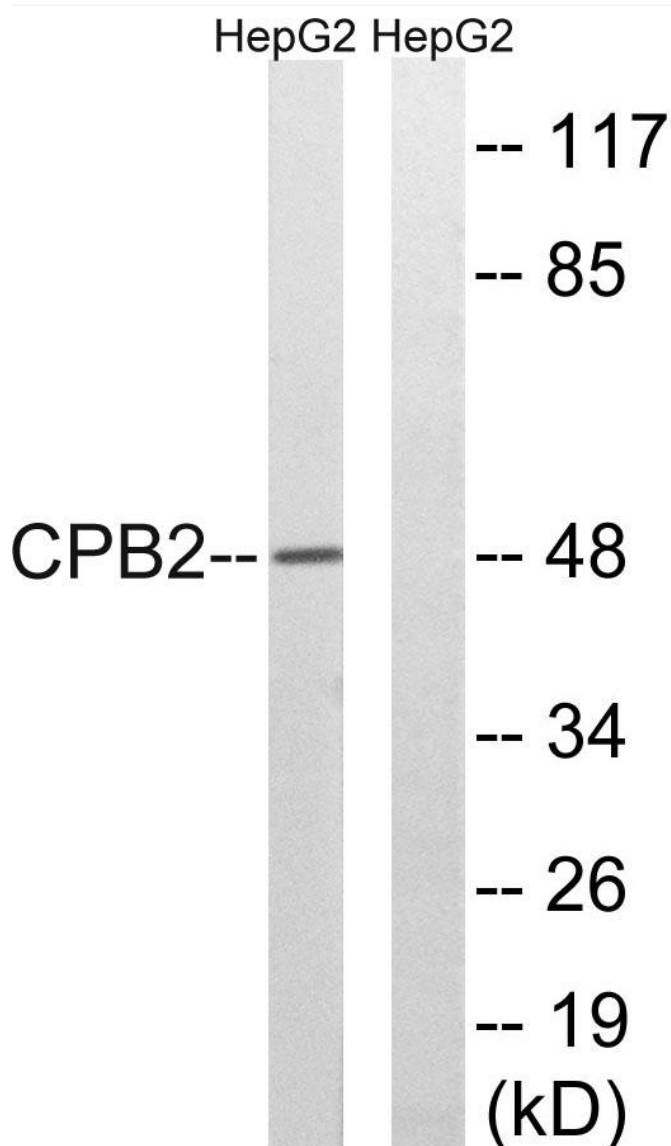
**matters needing attention**

Avoid repeated freezing and thawing!

**Usage suggestions**

This product can be used in immunological reaction related experiments. For more information, please consult technical personnel.

**Products Images**



Western Blot analysis of various cells using TAFI Monoclonal Antibody