



# TAB182 Monoclonal Antibody

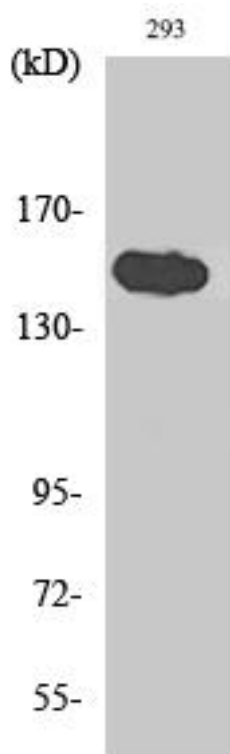
<b>Catalog No</b>	YP-mAb-04234
<b>Isotype</b>	IgG
<b>Reactivity</b>	Human;Mouse
<b>Applications</b>	WB
<b>Gene Name</b>	TNKS1BP1
<b>Protein Name</b>	182 kDa tankyrase-1-binding protein
<b>Immunogen</b>	The antiserum was produced against synthesized peptide derived from human TNKS1BP1. AA range:1601-1650
<b>Specificity</b>	TAB182 Monoclonal Antibody detects endogenous levels of TAB182 protein.
<b>Formulation</b>	Liquid in PBS containing 50% glycerol, 0.5% BSA and 0.02% sodium azide.
<b>Source</b>	Monoclonal, Mouse,IgG
<b>Purification</b>	The antibody was affinity-purified from mouse antiserum by affinity-chromatography using epitope-specific immunogen.
<b>Dilution</b>	WB 1:500-1:2000
<b>Concentration</b>	1 mg/ml
<b>Purity</b>	≥90%
<b>Storage Stability</b>	-20°C/1 year
<b>Synonyms</b>	TNKS1BP1; KIAA1741; TAB182; 182 kDa tankyrase-1-binding protein
<b>Observed Band</b>	150kD
<b>Cell Pathway</b>	Nucleus. Cytoplasm, cytoskeleton. Chromosome. Colocalizes with chromosomes during mitosis, and in the cytoplasm with cortical actin.
<b>Tissue Specificity</b>	Detected in testis, ovary, lung, skeletal muscle, heart, prostate and pancreas, and at very low levels in brain and peripheral blood leukocytes.
<b>Function</b>	PTM:ADP-ribosylated by TNKS1 (in vitro).,PTM:Phosphorylated upon DNA damage, probably by ATM or ATR.,subcellular location:Colocalizes with chromosomes during mitosis, and in the cytoplasm with cortical actin.,subunit:Binds to the ANK repeat domain of TNKS1 and TNKS2.,tissue specificity:Detected in testis, ovary, lung, skeletal muscle, heart, prostate and pancreas, and at very low levels in brain and peripheral blood leukocytes.,
<b>Background</b>	PTM:ADP-ribosylated by TNKS1 (in vitro).,PTM:Phosphorylated upon DNA damage, probably by ATM or ATR.,subcellular location:Colocalizes with chromosomes during mitosis, and in the cytoplasm with cortical actin.,subunit:Binds to the ANK repeat domain of TNKS1 and TNKS2.,tissue specificity:Detected in testis, ovary, lung, skeletal muscle, heart, prostate and pancreas, and at very low levels in brain and peripheral blood leukocytes.,

**matters needing attention**

Avoid repeated freezing and thawing!

**Usage suggestions**

This product can be used in immunological reaction related experiments. For more information, please consult technical personnel.

**Products Images**

Western Blot analysis of various cells using TAB182 Monoclonal Antibody