

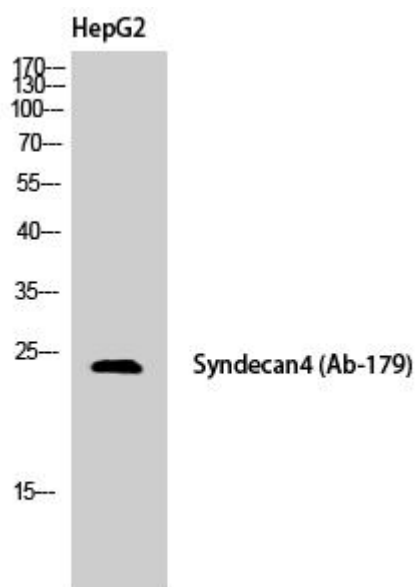


# Syndecan-4 Monoclonal Antibody

<b>Catalog No</b>	YP-mAb-04232
<b>Isotype</b>	IgG
<b>Reactivity</b>	Human;Mouse;Rat
<b>Applications</b>	WB
<b>Gene Name</b>	SDC4
<b>Protein Name</b>	Syndecan-4
<b>Immunogen</b>	The antiserum was produced against synthesized peptide derived from human Syndecan4. AA range:145-194
<b>Specificity</b>	Syndecan-4 Monoclonal Antibody detects endogenous levels of Syndecan-4 protein.
<b>Formulation</b>	Liquid in PBS containing 50% glycerol, 0.5% BSA and 0.02% sodium azide.
<b>Source</b>	Monoclonal, Mouse,IgG
<b>Purification</b>	The antibody was affinity-purified from mouse antiserum by affinity-chromatography using epitope-specific immunogen.
<b>Dilution</b>	WB 1:500-1:2000
<b>Concentration</b>	1 mg/ml
<b>Purity</b>	≥90%
<b>Storage Stability</b>	-20°C/1 year
<b>Synonyms</b>	SDC4; Syndecan-4; SYND4; Amphiglycan; Ryudocan core protein
<b>Observed Band</b>	22kD
<b>Cell Pathway</b>	[Isoform 1]: Membrane ; Single-pass type I membrane protein . Secreted . Shedding of the ectodomain produces a soluble form. .; [Isoform 2]: Secreted.
<b>Tissue Specificity</b>	Expressed in epithelial and fibroblastic cells.
<b>Function</b>	function:Cell surface proteoglycan that bears heparan sulfate.,function:Cell surface proteoglycan.,similarity:Belongs to the syndecan proteoglycan family.,subunit:Homodimer. Interacts with CDCP1, with GIPC PDZ domain and with NUDT16L1/SDOS (By similarity). Interacts with SDCBP.,tissue specificity:Expressed in epithelial and fibroblastic cells.,
<b>Background</b>	The protein encoded by this gene is a transmembrane (type I) heparan sulfate proteoglycan that functions as a receptor in intracellular signaling. The encoded protein is found as a homodimer and is a member of the syndecan proteoglycan family. This gene is found on chromosome 20, while a pseudogene has been found on chromosome 22. [provided by RefSeq, Jul 2008],
<b>matters needing attention</b>	Avoid repeated freezing and thawing!

**Usage suggestions**

This product can be used in immunological reaction related experiments. For more information, please consult technical personnel.

**Products Images**

Western Blot analysis of various cells using  
Syndecan-4 Monoclonal Antibody