

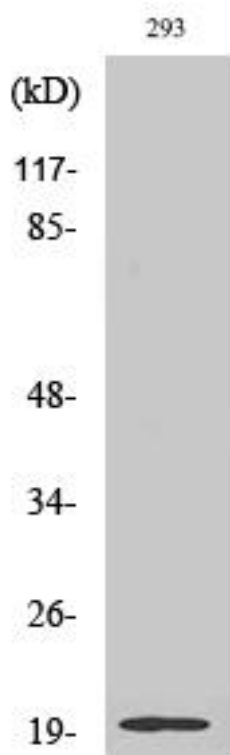


Stathmin-3 Monoclonal Antibody

Catalog No	YP-mAb-04226
Isotype	IgG
Reactivity	Human;Mouse;Rat
Applications	WB
Gene Name	STMN3
Protein Name	Stathmin-3
Immunogen	The antiserum was produced against synthesized peptide derived from human STMN3. AA range:61-110
Specificity	Stathmin-3 Monoclonal Antibody detects endogenous levels of Stathmin-3 protein.
Formulation	Liquid in PBS containing 50% glycerol, 0.5% BSA and 0.02% sodium azide.
Source	Monoclonal, Mouse,IgG
Purification	The antibody was affinity-purified from mouse antiserum by affinity-chromatography using epitope-specific immunogen.
Dilution	WB 1:500-1:2000
Concentration	1 mg/ml
Purity	≥90%
Storage Stability	-20°C/1 year
Synonyms	STMN3; SCLIP; Stathmin-3; SCG10-like protein
Observed Band	22kD
Cell Pathway	Golgi apparatus . Cell projection, growth cone . Cell projection, axon . Cytoplasm, cytosol .
Tissue Specificity	Neuron specific.
Function	similarity:Belongs to the stathmin family.,tissue specificity:Neuron specific.,
Background	This gene encodes a protein which is a member of the stathmin protein family. Members of this protein family form a complex with tubulins at a ratio of 2 tubulins for each stathmin protein. Microtubules require the ordered assembly of alpha- and beta-tubulins, and formation of a complex with stathmin disrupts microtubule formation and function. A pseudogene of this gene is located on chromosome 22. Alternative splicing results in multiple transcript variants. [provided by RefSeq, Jan 2013],
matters needing attention	Avoid repeated freezing and thawing!

**Usage suggestions**

This product can be used in immunological reaction related experiments. For more information, please consult technical personnel.

Products Images

Western Blot analysis of various cells using Stathmin-3 Monoclonal Antibody