



# SLC4A8/10 Monoclonal Antibody

<b>Catalog No</b>	YP-mAb-04217
<b>Isotype</b>	IgG
<b>Reactivity</b>	Human;Mouse;Rat
<b>Applications</b>	WB
<b>Gene Name</b>	SLC4A8/SLC4A10
<b>Protein Name</b>	Electroneutral sodium bicarbonate exchanger 1/Sodium-driven chloride bicarbonate exchanger
<b>Immunogen</b>	The antiserum was produced against synthesized peptide derived from human SLC4A8/10. AA range:411-460
<b>Specificity</b>	SLC4A8/10 Monoclonal Antibody detects endogenous levels of SLC4A8/10 protein.
<b>Formulation</b>	Liquid in PBS containing 50% glycerol, 0.5% BSA and 0.02% sodium azide.
<b>Source</b>	Monoclonal, Mouse,IgG
<b>Purification</b>	The antibody was affinity-purified from mouse antiserum by affinity-chromatography using epitope-specific immunogen.
<b>Dilution</b>	WB 1:500-1:2000
<b>Concentration</b>	1 mg/ml
<b>Purity</b>	≥90%
<b>Storage Stability</b>	-20°C/1 year
<b>Synonyms</b>	SLC4A8; KIAA0739; NBC; NBC3; NDCBE1; Electroneutral sodium bicarbonate exchanger 1; Electroneutral Na(+)-driven Cl-HCO <sub>3</sub> exchanger; Solute carrier family 4 member 8; k-NBC3; SLC4A10; NCBE; Sodium-driven chloride bicarbonate exchanger; Solute
<b>Observed Band</b>	140kD
<b>Cell Pathway</b>	Membrane ; Multi-pass membrane protein .
<b>Tissue Specificity</b>	Expressed in the pyramidal cells of the hippocampus (at protein level). Highly expressed in all major regions of the brain, spinal column and in testis, and moderate levels in trachea, thyroid and medulla region of kidney. Low expression levels observed in pancreas and kidney cortex.
<b>Function</b>	function:Mediates electroneutral sodium- and carbonate-dependent choride-HCO <sub>3</sub> (-) exchange with a Na(+):HCO <sub>3</sub> (-) stoichiometry of 2:1. Plays a major role in pH regulation in neurons. May be involved in cell pH regulation by transporting HCO <sub>3</sub> (-) from blood to cell. Enhanced expression in severe acid stress could be important for cell survival by mediating the influx of HCO <sub>3</sub> (-) into the cells. Also mediates lithium-dependent HCO <sub>3</sub> (-) cotransport. May be regulated by osmolarity.,miscellaneous:Activity is inhibited by 4,4'-Di-isothiocyanatostilbene-2,2'-disulfonic acid (DIDS - an inhibitor of several anionic channels and transporters),similarity:Belongs to the anion exchanger (TC



2.A.31) family.,tissue specificity:Expressed in the pyramidal cells of the hippocampus (at protein level). Highly expressed in all major regions of the brain, spinal column and in testis, and moderate levels in trache

#### Background

The protein encoded by this gene is a membrane protein that functions to transport sodium and bicarbonate ions across the cell membrane. The encoded protein is important for pH regulation in neurons. The activity of this protein can be inhibited by 4,4'-Di-isothiocyanatostilbene-2,2'-disulfonic acid (DIDS). Several transcript variants encoding different isoforms have been found for this gene. [provided by RefSeq, Apr 2012],

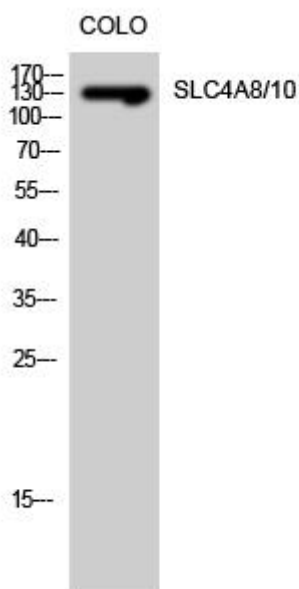
#### matters needing attention

Avoid repeated freezing and thawing!

#### Usage suggestions

This product can be used in immunological reaction related experiments. For more information, please consult technical personnel.

### Products Images



Western Blot analysis of various cells using SLC4A8/10 Monoclonal Antibody