

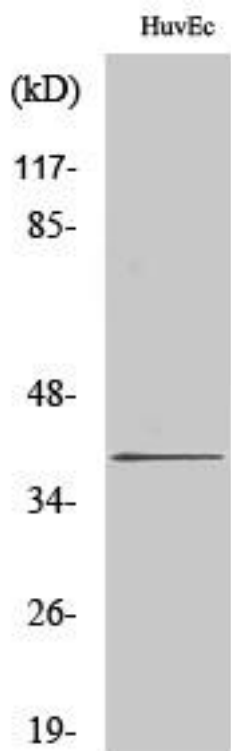


# Sideroflexin-4 Monoclonal Antibody

<b>Catalog No</b>	YP-mAb-04210
<b>Isotype</b>	IgG
<b>Reactivity</b>	Human;Rat;Mouse;
<b>Applications</b>	WB
<b>Gene Name</b>	SFXN4
<b>Protein Name</b>	Sideroflexin-4
<b>Immunogen</b>	The antiserum was produced against synthesized peptide derived from human SFXN4. AA range:1-50
<b>Specificity</b>	Sideroflexin-4 Monoclonal Antibody detects endogenous levels of Sideroflexin-4 protein.
<b>Formulation</b>	Liquid in PBS containing 50% glycerol, 0.5% BSA and 0.02% sodium azide.
<b>Source</b>	Monoclonal, Mouse,IgG
<b>Purification</b>	The antibody was affinity-purified from mouse antiserum by affinity-chromatography using epitope-specific immunogen.
<b>Dilution</b>	WB 1:500-1:2000
<b>Concentration</b>	1 mg/ml
<b>Purity</b>	≥90%
<b>Storage Stability</b>	-20°C/1 year
<b>Synonyms</b>	SFXN4; BCRM1; Sideroflexin-4; Breast cancer resistance marker 1
<b>Observed Band</b>	37kD
<b>Cell Pathway</b>	Mitochondrion inner membrane ; Multi-pass membrane protein .
<b>Tissue Specificity</b>	Mammary tumor,Placenta,Tongue,
<b>Function</b>	function:Potential iron transporter.,similarity:Belongs to the sideroflexin family.,
<b>Background</b>	This gene encodes a member of the sideroflexin family. The encoded protein is a transmembrane protein of the inner mitochondrial membrane, and is required for mitochondrial respiratory homeostasis and erythropoiesis. Mutations in this gene are associated with mitochondriopathy and macrocytic anemia. Alternatively spliced transcript variants have been found in this gene. [provided by RefSeq, Jan 2014],
<b>matters needing attention</b>	Avoid repeated freezing and thawing!
<b>Usage suggestions</b>	This product can be used in immunological reaction related experiments. For more information, please consult technical personnel.



## Products Images



Western Blot analysis of various cells using  
Sideroflexin-4 Monoclonal Antibody