

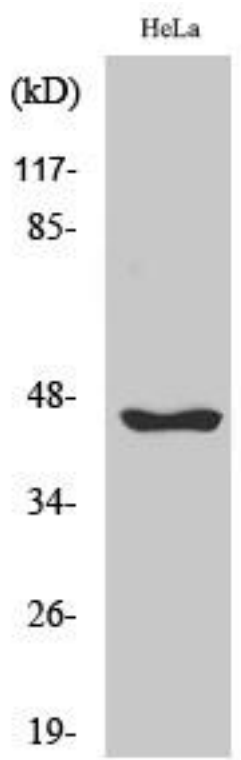


Serpin B12 Monoclonal Antibody

Catalog No	YP-mAb-04204
Isotype	IgG
Reactivity	Human;Rat;Mouse;
Applications	WB
Gene Name	SERPINB12
Protein Name	Serpin B12
Immunogen	The antiserum was produced against synthesized peptide derived from human SERPINB12. AA range:241-290
Specificity	Serpin B12 Monoclonal Antibody detects endogenous levels of Serpin B12 protein.
Formulation	Liquid in PBS containing 50% glycerol, 0.5% BSA and 0.02% sodium azide.
Source	Monoclonal, Mouse,IgG
Purification	The antibody was affinity-purified from mouse antiserum by affinity-chromatography using epitope-specific immunogen.
Dilution	WB 1:500-1:2000
Concentration	1 mg/ml
Purity	≥90%
Storage Stability	-20°C/1 year
Synonyms	SERPINB12; Serpin B12
Observed Band	47kD
Cell Pathway	Cytoplasm .
Tissue Specificity	Expressed in many tissues, including brain, bone marrow, lymph node, heart, lung, liver, pancreas, testis, ovary, and intestine.
Function	function:Inhibits trypsin and plasmin, but not thrombin, coagulation factor Xa, or urokinase-type plasminogen activator.,similarity:Belongs to the serpin family.,similarity:Belongs to the serpin family. Ov-serpin subfamily.,tissue specificity:Expressed in many tissues, including brain, bone marrow, lymph node, heart, lung, liver, pancreas, testis, ovary, and intestine.,
Background	function:Inhibits trypsin and plasmin, but not thrombin, coagulation factor Xa, or urokinase-type plasminogen activator.,similarity:Belongs to the serpin family.,similarity:Belongs to the serpin family. Ov-serpin subfamily.,tissue specificity:Expressed in many tissues, including brain, bone marrow, lymph node, heart, lung, liver, pancreas, testis, ovary, and intestine.,
matters needing attention	Avoid repeated freezing and thawing!

**Usage suggestions**

This product can be used in immunological reaction related experiments. For more information, please consult technical personnel.

Products Images

Western Blot analysis of various cells using Serpin B12 Monoclonal Antibody