



Septin 6 Monoclonal Antibody

| | |
|---------------------------|--|
| Catalog No | YP-mAb-04200 |
| Isotype | IgG |
| Reactivity | Human;Mouse;Rat |
| Applications | WB |
| Gene Name | 6-9月 |
| Protein Name | Septin-6 |
| Immunogen | The antiserum was produced against synthesized peptide derived from human SEPT6. AA range:223-272 |
| Specificity | Septin 6 Monoclonal Antibody detects endogenous levels of Septin 6 protein. |
| Formulation | Liquid in PBS containing 50% glycerol, 0.5% BSA and 0.02% sodium azide. |
| Source | Monoclonal, Mouse,IgG |
| Purification | The antibody was affinity-purified from mouse antiserum by affinity-chromatography using epitope-specific immunogen. |
| Dilution | WB 1:500-1:2000 |
| Concentration | 1 mg/ml |
| Purity | ≥90% |
| Storage Stability | -20°C/1 year |
| Synonyms | SEPT6; KIAA0128; SEP2; Septin-6 |
| Observed Band | 50kD |
| Cell Pathway | Cytoplasm . Cytoplasm, cytoskeleton, spindle . Chromosome, centromere, kinetochore . Cleavage furrow . Midbody . Cell projection, cilium, flagellum . In metaphase cells, localized within the microtubule spindle. At the metaphase plate, in close apposition to the kinetochores of the congressed chromosomes. In cells undergoing cytokinesis, localized to the midbody, the ingressing cleavage furrow, and the central spindle. Found in the sperm annulus (PubMed:25588830). . |
| Tissue Specificity | Widely expressed. |
| Function | function:Involved in cytokinesis .,PTM:Phosphorylated upon DNA damage, probably by ATM or ATR.,similarity:Belongs to the septin family.,subunit:Heterohexamer composed of two heterotrimers containing one copy each of SEPT2, SEPT6 and SEPT7. The asymmetrical heterotrimers associate head-to-head to form a hexameric unit that assembles into filaments. Interacts with SEPT12. Interaction with SEPT12 alters filament structure., |
| Background | septin 6(SEPT6) Homo sapiens This gene is a member of the septin family of GTPases. Members of this family are required for cytokinesis. One version of pediatric acute myeloid leukemia is the result of a reciprocal translocation between chromosomes 11 and X, with the breakpoint associated with the genes |



encoding the mixed-lineage leukemia and septin 2 proteins. This gene encodes four transcript variants encoding three distinct isoforms. An additional transcript variant has been identified, but its biological validity has not been determined. [provided by RefSeq, Jul 2008],

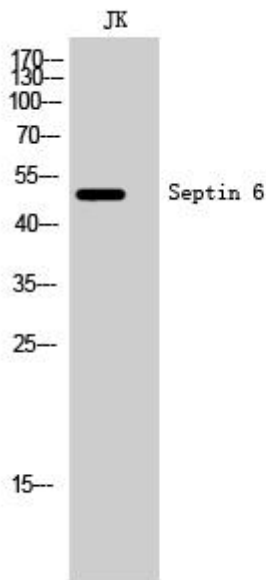
matters needing attention

Avoid repeated freezing and thawing!

Usage suggestions

This product can be used in immunological reaction related experiments. For more information, please consult technical personnel.

Products Images



Western Blot analysis of various cells using Septin 6 Monoclonal Antibody