

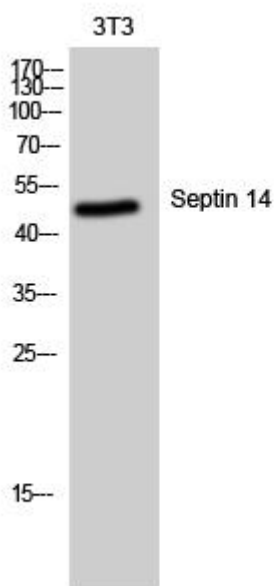


Septin 14 Monoclonal Antibody

Catalog No	YP-mAb-04196
Isotype	IgG
Reactivity	Human;Rat;Mouse;
Applications	WB
Gene Name	14-9月
Protein Name	Septin-14
Immunogen	The antiserum was produced against synthesized peptide derived from human SEPT14. AA range:341-390
Specificity	Septin 14 Monoclonal Antibody detects endogenous levels of Septin 14 protein.
Formulation	Liquid in PBS containing 50% glycerol, 0.5% BSA and 0.02% sodium azide.
Source	Monoclonal, Mouse,IgG
Purification	The antibody was affinity-purified from mouse antiserum by affinity-chromatography using epitope-specific immunogen.
Dilution	WB 1:500-1:2000
Concentration	1 mg/ml
Purity	≥90%
Storage Stability	-20°C/1 year
Synonyms	SEPT14; Septin-14
Observed Band	50kD
Cell Pathway	Cytoplasm . Cytoplasm, cytoskeleton . Cell projection, axon . Cell projection, dendrite . Perikaryon . Cytoplasm, perinuclear region . Cytoplasmic vesicle, secretory vesicle, acrosome . Colocalizes with actin stress fibers (PubMed:17922164). Expressed in the perinuclear rim and manchette structure in early elongating spermatids during spermiogenesis (By similarity). .
Tissue Specificity	Testis-specific (at protein level).
Function	function:Involved in cytokinesis .,similarity:Belongs to the septin family.,
Background	SEPT14 is a member of the highly conserved septin family of GTP-binding cytoskeletal proteins implicated in membrane transport, apoptosis, cell polarity, cell cycle regulation, cytokinesis, and other cellular functions (Peterson et al., 2007 [PubMed 17922164]).[supplied by OMIM, Jul 2008],
matters needing attention	Avoid repeated freezing and thawing!

**Usage suggestions**

This product can be used in immunological reaction related experiments. For more information, please consult technical personnel.

Products Images

Western Blot analysis of various cells using Septin 14 Monoclonal Antibody