



SCCA2 Monoclonal Antibody

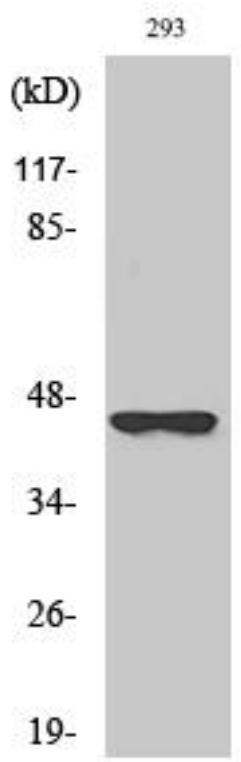
| | |
|----------------------------------|---|
| Catalog No | YP-mAb-04186 |
| Isotype | IgG |
| Reactivity | Human;Rat;Mouse; |
| Applications | WB |
| Gene Name | SERPINB4 |
| Protein Name | Serpin B4 |
| Immunogen | The antiserum was produced against synthesized peptide derived from human SERPINB4. AA range:261-310 |
| Specificity | SCCA2 Monoclonal Antibody detects endogenous levels of SCCA2 protein. |
| Formulation | Liquid in PBS containing 50% glycerol, 0.5% BSA and 0.02% sodium azide. |
| Source | Monoclonal, Mouse,IgG |
| Purification | The antibody was affinity-purified from mouse antiserum by affinity-chromatography using epitope-specific immunogen. |
| Dilution | WB 1:500-1:2000 |
| Concentration | 1 mg/ml |
| Purity | ≥90% |
| Storage Stability | -20°C/1 year |
| Synonyms | SERPINB4; PI11; SCCA2; Serpin B4; Leupin; Peptidase inhibitor 11; PI-11; Squamous cell carcinoma antigen 2; SCCA-2 |
| Observed Band | 45kD |
| Cell Pathway | Cytoplasm . Seems to also be secreted in plasma by cancerous cells but at a low level. |
| Tissue Specificity | Squamous cells. |
| Function | function:May act as a protease inhibitor to modulate the host immune response against tumor cells.,similarity:Belongs to the serpin family.,similarity:Belongs to the serpin family. Ov-serpin subfamily.,subcellular location:Seems to also be secreted in plasma by cancerous cells but at a low level.,tissue specificity:Squamous cells., |
| Background | function:May act as a protease inhibitor to modulate the host immune response against tumor cells.,similarity:Belongs to the serpin family.,similarity:Belongs to the serpin family. Ov-serpin subfamily.,subcellular location:Seems to also be secreted in plasma by cancerous cells but at a low level.,tissue specificity:Squamous cells., |
| matters needing attention | Avoid repeated freezing and thawing! |



Usage suggestions

This product can be used in immunological reaction related experiments. For more information, please consult technical personnel.

Products Images



Western Blot analysis of various cells using SCCA2 Monoclonal Antibody