



Ribosomal Protein S9 Monoclonal Antibody

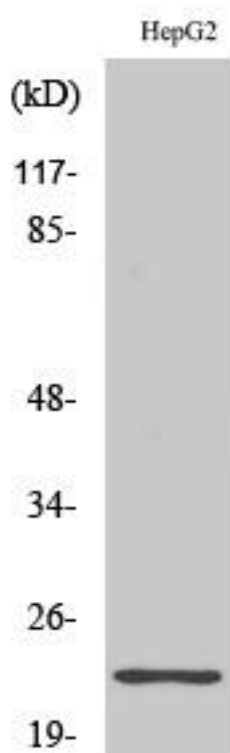
Catalog No	YP-mAb-04173
Isotype	IgG
Reactivity	Human;Mouse;Rat
Applications	WB
Gene Name	RPS9
Protein Name	40S ribosomal protein S9
Immunogen	The antiserum was produced against synthesized peptide derived from human RPS9. AA range:31-80
Specificity	Ribosomal Protein S9 Monoclonal Antibody detects endogenous levels of Ribosomal Protein S9 protein.
Formulation	Liquid in PBS containing 50% glycerol, 0.5% BSA and 0.02% sodium azide.
Source	Monoclonal, Mouse,IgG
Purification	The antibody was affinity-purified from mouse antiserum by affinity-chromatography using epitope-specific immunogen.
Dilution	WB 1:500-1:2000
Concentration	1 mg/ml
Purity	≥90%
Storage Stability	-20°C/1 year
Synonyms	RPS9; 40S ribosomal protein S9
Observed Band	23kD
Cell Pathway	Cytoplasm . Localized in cytoplasmic mRNP granules containing untranslated mRNAs.
Tissue Specificity	Brain,Colon,Muscle,Placenta,Skin,
Function	similarity:Belongs to the ribosomal protein S4P family.,similarity:Contains 1 S4 RNA-binding domain.,
Background	Ribosomes, the organelles that catalyze protein synthesis, consist of a small 40S subunit and a large 60S subunit. Together these subunits are composed of 4 RNA species and approximately 80 structurally distinct proteins. This gene encodes a ribosomal protein that is a component of the 40S subunit. The protein belongs to the S4P family of ribosomal proteins. It is located in the cytoplasm. Variable expression of this gene in colorectal cancers compared to adjacent normal tissues has been observed, although no correlation between the level of expression and the severity of the disease has been found. As is typical for genes encoding ribosomal proteins, multiple processed pseudogenes derived from this gene are dispersed through the genome. [provided by RefSeq, Jul 2008],

**matters needing attention**

Avoid repeated freezing and thawing!

Usage suggestions

This product can be used in immunological reaction related experiments. For more information, please consult technical personnel.

Products Images

Western Blot analysis of various cells using Ribosomal Protein S9 Monoclonal Antibody