



Ribosomal Protein S8 Monoclonal Antibody

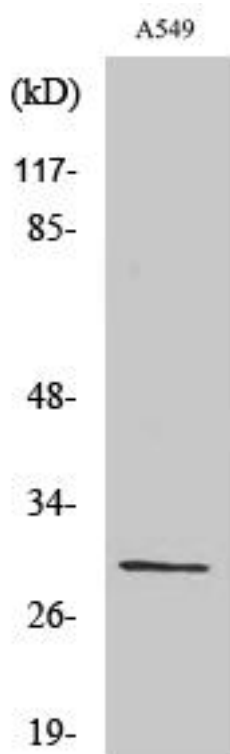
Catalog No	YP-mAb-04172
Isotype	IgG
Reactivity	Human;Mouse;Rat
Applications	WB
Gene Name	RPS8
Protein Name	40S ribosomal protein S8
Immunogen	The antiserum was produced against synthesized peptide derived from human RPS8. AA range:111-160
Specificity	Ribosomal Protein S8 Monoclonal Antibody detects endogenous levels of Ribosomal Protein S8 protein.
Formulation	Liquid in PBS containing 50% glycerol, 0.5% BSA and 0.02% sodium azide.
Source	Monoclonal, Mouse,IgG
Purification	The antibody was affinity-purified from mouse antiserum by affinity-chromatography using epitope-specific immunogen.
Dilution	WB 1:500-1:2000
Concentration	1 mg/ml
Purity	≥90%
Storage Stability	-20°C/1 year
Synonyms	RPS8; OK/SW-cl.83; 40S ribosomal protein S8
Observed Band	30kD
Cell Pathway	Cytoplasm . Membrane ; Lipid-anchor . Localized in cytoplasmic mRNP granules containing untranslated mRNAs.
Tissue Specificity	Colon adenocarcinoma,Liver,Placenta,Thalamus,Uterus,
Function	similarity:Belongs to the ribosomal protein S8e family.,
Background	Ribosomes, the organelles that catalyze protein synthesis, consist of a small 40S subunit and a large 60S subunit. Together these subunits are composed of 4 RNA species and approximately 80 structurally distinct proteins. This gene encodes a ribosomal protein that is a component of the 40S subunit. The protein belongs to the S8E family of ribosomal proteins. It is located in the cytoplasm. Increased expression of this gene in colorectal tumors and colon polyps compared to matched normal colonic mucosa has been observed. This gene is co-transcribed with the small nucleolar RNA genes U38A, U38B, U39, and U40, which are located in its fourth, fifth, first, and second introns, respectively. As is typical for genes encoding ribosomal proteins, there are multiple processed pseudogenes of this gene dispersed through the genome. [provided by RefSeq, Jul 2008],

**matters needing attention**

Avoid repeated freezing and thawing!

Usage suggestions

This product can be used in immunological reaction related experiments. For more information, please consult technical personnel.

Products Images

Western Blot analysis of various cells using Ribosomal Protein S8 Monoclonal Antibody