



Ribosomal Protein S5 Monoclonal Antibody

Catalog No	YP-mAb-04170
Isotype	IgG
Reactivity	Human;Mouse;Rat
Applications	WB
Gene Name	RPS5
Protein Name	40S ribosomal protein S5
Immunogen	Synthesized peptide derived from Ribosomal Protein S5 . at AA range: 60-140
Specificity	Ribosomal Protein S5 Monoclonal Antibody detects endogenous levels of Ribosomal Protein S5 protein.
Formulation	Liquid in PBS containing 50% glycerol, 0.5% BSA and 0.02% sodium azide.
Source	Monoclonal, Mouse,IgG
Purification	The antibody was affinity-purified from mouse antiserum by affinity-chromatography using epitope-specific immunogen.
Dilution	WB 1:500-1:2000
Concentration	1 mg/ml
Purity	≥90%
Storage Stability	-20°C/1 year
Synonyms	RPS5; 40S ribosomal protein S5
Observed Band	22kD
Cell Pathway	nucleoplasm,cytosol,focal adhesion,small ribosomal subunit,membrane,cytosolic small ribosomal subunit,intracellular ribonucleoprotein complex,extracellular matrix,extracellular exosome,
Tissue Specificity	B-cell lymphoma,Bone,Cervix carcinoma,Colon,Ovary,Placenta,
Function	similarity:Belongs to the ribosomal protein S7P family.,
Background	Ribosomes, the organelles that catalyze protein synthesis, consist of a small 40S subunit and a large 60S subunit. Together these subunits are composed of 4 RNA species and approximately 80 structurally distinct proteins. This gene encodes a ribosomal protein that is a component of the 40S subunit. The protein belongs to the S7P family of ribosomal proteins. It is located in the cytoplasm. Variable expression of this gene in colorectal cancers compared to adjacent normal tissues has been observed, although no correlation between the level of expression and the severity of the disease has been found. As is typical for genes encoding ribosomal proteins, there are multiple processed pseudogenes of this gene dispersed through the genome. [provided by RefSeq, Jul 2008],



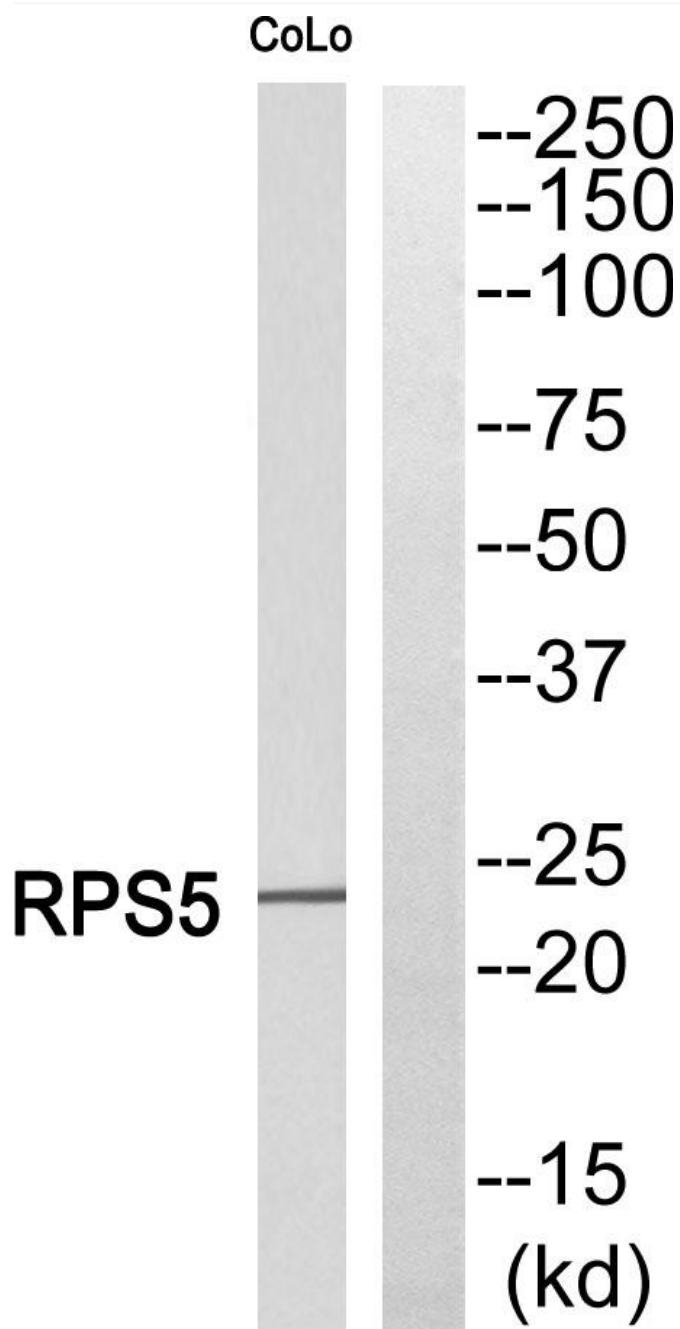
matters needing
attention

Avoid repeated freezing and thawing!

Usage suggestions

This product can be used in immunological reaction related experiments. For more information, please consult technical personnel.

Products Images



Western Blot analysis of various cells using Ribosomal Protein S5 Monoclonal Antibody