



# Ribosomal Protein S13 Monoclonal Antibody

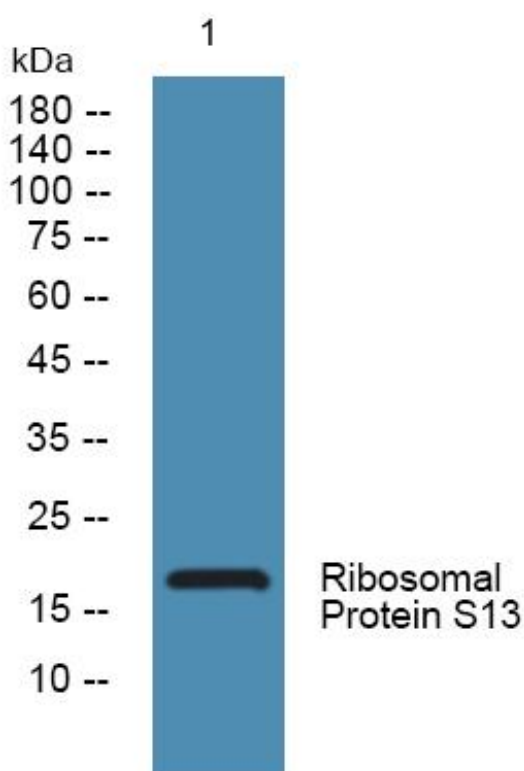
<b>Catalog No</b>	YP-mAb-04156
<b>Isotype</b>	IgG
<b>Reactivity</b>	Human;Mouse;Rat
<b>Applications</b>	WB
<b>Gene Name</b>	RPS13
<b>Protein Name</b>	40S ribosomal protein S13
<b>Immunogen</b>	The antiserum was produced against synthesized peptide derived from human RPS13. AA range:71-120
<b>Specificity</b>	Ribosomal Protein S13 Monoclonal Antibody detects endogenous levels of Ribosomal Protein S13 protein.
<b>Formulation</b>	Liquid in PBS containing 50% glycerol, 0.5% BSA and 0.02% sodium azide.
<b>Source</b>	Monoclonal, Mouse,IgG
<b>Purification</b>	The antibody was affinity-purified from mouse antiserum by affinity-chromatography using epitope-specific immunogen.
<b>Dilution</b>	WB 1:500-1:2000
<b>Concentration</b>	1 mg/ml
<b>Purity</b>	≥90%
<b>Storage Stability</b>	-20°C/1 year
<b>Synonyms</b>	RPS13; 40S ribosomal protein S13
<b>Observed Band</b>	17kD
<b>Cell Pathway</b>	nucleus,nucleoplasm,nucleolus,cytosol,ribosome,focal adhesion,membrane,cytosolic small ribosomal subunit,extracellular matrix,extracellular exosome,
<b>Tissue Specificity</b>	Bone,Brain,Epithelium,Muscle,Pancreas,Placenta,
<b>Function</b>	similarity:Belongs to the ribosomal protein S15P family.,
<b>Background</b>	Ribosomes, the organelles that catalyze protein synthesis, consist of a small 40S subunit and a large 60S subunit. Together these subunits are composed of 4 RNA species and approximately 80 structurally distinct proteins. This gene encodes a ribosomal protein that is a component of the 40S subunit. The protein belongs to the S15P family of ribosomal proteins. It is located in the cytoplasm. The protein has been shown to bind to the 5.8S rRNA in rat. The gene product of the E. coli ortholog (ribosomal protein S15) functions at early steps in ribosome assembly. This gene is co-transcribed with two U14 small nucleolar RNA genes, which are located in its third and fifth introns. As is typical for genes encoding ribosomal proteins, there are multiple processed pseudogenes of this gene dispersed through the genome. [provided by RefSeq, Jul 2008],

**matters needing attention**

Avoid repeated freezing and thawing!

**Usage suggestions**

This product can be used in immunological reaction related experiments. For more information, please consult technical personnel.

**Products Images**

Western Blot analysis of various cells using Ribosomal Protein S13 Monoclonal Antibody