

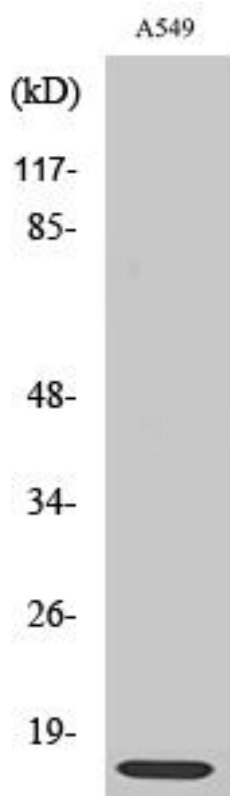


Ribosomal Protein L30 Monoclonal Antibody

| | |
|----------------------------------|--|
| Catalog No | YP-mAb-04139 |
| Isotype | IgG |
| Reactivity | Human;Mouse;Rat;Monkey |
| Applications | WB |
| Gene Name | RPL30 |
| Protein Name | 60S ribosomal protein L30 |
| Immunogen | The antiserum was produced against synthesized peptide derived from human RPL30. AA range:66-115 |
| Specificity | Ribosomal Protein L30 Monoclonal Antibody detects endogenous levels of Ribosomal Protein L30 protein. |
| Formulation | Liquid in PBS containing 50% glycerol, 0.5% BSA and 0.02% sodium azide. |
| Source | Monoclonal, Mouse,IgG |
| Purification | The antibody was affinity-purified from mouse antiserum by affinity-chromatography using epitope-specific immunogen. |
| Dilution | WB 1:500-1:2000 |
| Concentration | 1 mg/ml |
| Purity | ≥90% |
| Storage Stability | -20°C/1 year |
| Synonyms | RPL30; 60S ribosomal protein L30 |
| Observed Band | 13kD |
| Cell Pathway | nucleus,cytoplasm,cytosol,ribosome,focal adhesion,membrane,cytosolic large ribosomal subunit,extracellular matrix,extracellular exosome, |
| Tissue Specificity | Embryonic stem cell,Epithelium,Mammary gland,Placenta, |
| Function | similarity:Belongs to the ribosomal protein L30e family., |
| Background | Ribosomes, the organelles that catalyze protein synthesis, consist of a small 40S subunit and a large 60S subunit. Together these subunits are composed of 4 RNA species and approximately 80 structurally distinct proteins. This gene encodes a ribosomal protein that is a component of the 60S subunit. The protein belongs to the L30E family of ribosomal proteins. It is located in the cytoplasm. This gene is co-transcribed with the U72 small nucleolar RNA gene, which is located in its fourth intron. As is typical for genes encoding ribosomal proteins, there are multiple processed pseudogenes of this gene dispersed through the genome. [provided by RefSeq, Jul 2008], |
| matters needing attention | Avoid repeated freezing and thawing! |

**Usage suggestions**

This product can be used in immunological reaction related experiments. For more information, please consult technical personnel.

Products Images

Western Blot analysis of various cells using Ribosomal Protein L30 Monoclonal Antibody