

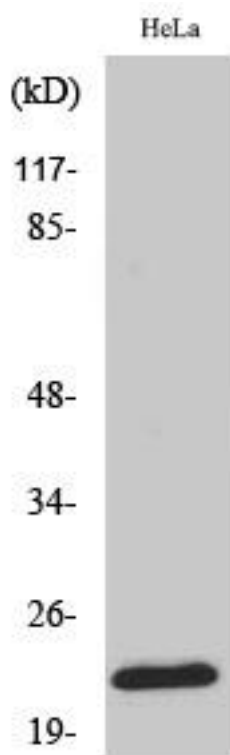


Ribosomal Protein L18 Monoclonal Antibody

Catalog No	YP-mAb-04132
Isotype	IgG
Reactivity	Human;Mouse;Rat
Applications	WB
Gene Name	RPL18
Protein Name	60S ribosomal protein L18
Immunogen	The antiserum was produced against synthesized peptide derived from human RPL18. AA range:111-160
Specificity	Ribosomal Protein L18 Monoclonal Antibody detects endogenous levels of Ribosomal Protein L18 protein.
Formulation	Liquid in PBS containing 50% glycerol, 0.5% BSA and 0.02% sodium azide.
Source	Monoclonal, Mouse,IgG
Purification	The antibody was affinity-purified from mouse antiserum by affinity-chromatography using epitope-specific immunogen.
Dilution	WB 1:500-1:2000
Concentration	1 mg/ml
Purity	≥90%
Storage Stability	-20°C/1 year
Synonyms	RPL18; 60S ribosomal protein L18
Observed Band	23kD
Cell Pathway	Cytoplasm, cytosol . Cytoplasm . Rough endoplasmic reticulum . Detected on cytosolic polysomes (PubMed:25957688). Detected in ribosomes that are associated with the rough endoplasmic reticulum (By similarity). .
Tissue Specificity	Brain,Colon,Epithelium,Lung,
Function	similarity:Belongs to the ribosomal protein L18e family.,
Background	Ribosomes, the organelles that catalyze protein synthesis, consist of a small 40S subunit and a large 60S subunit. Together these subunits are composed of 4 RNA species and approximately 80 structurally distinct proteins. This gene encodes a member of the L18E family of ribosomal proteins that is a component of the 60S subunit. As is typical for genes encoding ribosomal proteins, there are multiple processed pseudogenes of this gene dispersed through the genome. Alternatively spliced transcript variants encoding multiple isoforms have been observed for this gene. [provided by RefSeq, Jul 2012],
matters needing attention	Avoid repeated freezing and thawing!

**Usage suggestions**

This product can be used in immunological reaction related experiments. For more information, please consult technical personnel.

Products Images

Western Blot analysis of various cells using Ribosomal Protein L18 Monoclonal Antibody