

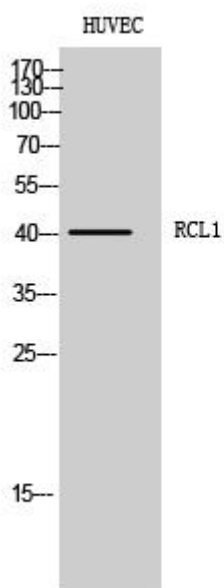


# RCL1 Monoclonal Antibody

<b>Catalog No</b>	YP-mAb-04113
<b>Isotype</b>	IgG
<b>Reactivity</b>	Human;Mouse;Rat
<b>Applications</b>	WB
<b>Gene Name</b>	RCL1
<b>Protein Name</b>	RNA 3'-terminal phosphate cyclase-like protein
<b>Immunogen</b>	The antiserum was produced against synthesized peptide derived from human RCL1. AA range:324-373
<b>Specificity</b>	RCL1 Monoclonal Antibody detects endogenous levels of RCL1 protein.
<b>Formulation</b>	Liquid in PBS containing 50% glycerol, 0.5% BSA and 0.02% sodium azide.
<b>Source</b>	Monoclonal, Mouse,IgG
<b>Purification</b>	The antibody was affinity-purified from mouse antiserum by affinity-chromatography using epitope-specific immunogen.
<b>Dilution</b>	WB 1:500-1:2000
<b>Concentration</b>	1 mg/ml
<b>Purity</b>	≥90%
<b>Storage Stability</b>	-20°C/1 year
<b>Synonyms</b>	RCL1; RNAC; RPC2; RPCL1; RTC2; HSPC338; RNA 3'-terminal phosphate cyclase-like protein
<b>Observed Band</b>	41kD
<b>Cell Pathway</b>	Nucleus, nucleolus .
<b>Tissue Specificity</b>	Eye,Seminom,Umbilical cord blood,
<b>Function</b>	function:Does not have cyclase activity. Plays a role in 40S-ribosomal-subunit biogenesis in the early pre-rRNA processing steps at sites A0, A1 and A2 that are required for proper maturation of the 18S RNA.,similarity:Belongs to the RNA 3'-terminal cyclase family. Type 2 subfamily.,
<b>Background</b>	function:Does not have cyclase activity. Plays a role in 40S-ribosomal-subunit biogenesis in the early pre-rRNA processing steps at sites A0, A1 and A2 that are required for proper maturation of the 18S RNA.,similarity:Belongs to the RNA 3'-terminal cyclase family. Type 2 subfamily.,
<b>matters needing attention</b>	Avoid repeated freezing and thawing!

**Usage suggestions**

This product can be used in immunological reaction related experiments. For more information, please consult technical personnel.

**Products Images**

Western Blot analysis of various cells using RCL1 Monoclonal Antibody