



PI-9 Monoclonal Antibody

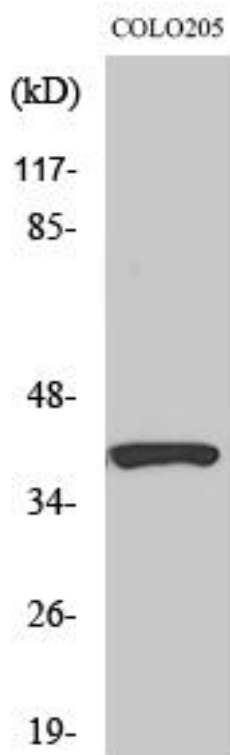
Catalog No	YP-mAb-04084
Isotype	IgG
Reactivity	Human;Mouse;Rat
Applications	WB
Gene Name	SERPINB9
Protein Name	Serpin B9
Immunogen	The antiserum was produced against synthesized peptide derived from human SERPINB9. AA range:241-290
Specificity	PI-9 Monoclonal Antibody detects endogenous levels of PI-9 protein.
Formulation	Liquid in PBS containing 50% glycerol, 0.5% BSA and 0.02% sodium azide.
Source	Monoclonal, Mouse,IgG
Purification	The antibody was affinity-purified from mouse antiserum by affinity-chromatography using epitope-specific immunogen.
Dilution	WB 1:500-1:2000
Concentration	1 mg/ml
Purity	≥90%
Storage Stability	-20°C/1 year
Synonyms	SERPINB9; PI9; Serpin B9; Cytoplasmic antiproteinase 3; CAP-3; CAP3; Peptidase inhibitor 9; PI-9
Observed Band	40kD
Cell Pathway	Cytoplasm.
Tissue Specificity	Bone marrow,Human esophagus tumor,Placenta,Testis,
Function	function:Granzyme B inhibitor.,similarity:Belongs to the serpin family.,similarity:Belongs to the serpin family. Ov-serpin subfamily.,
Background	This gene encodes a member of the serine protease inhibitor family which are also known as serpins. The encoded protein belongs to a subfamily of intracellular serpins. This protein inhibits the activity of the effector molecule granzyme B. Overexpression of this protein may prevent cytotoxic T-lymphocytes from eliminating certain tumor cells. A pseudogene of this gene is found on chromosome 6. [provided by RefSeq, Mar 2012],
matters needing attention	Avoid repeated freezing and thawing!



Usage suggestions

This product can be used in immunological reaction related experiments. For more information, please consult technical personnel.

Products Images



Western Blot analysis of various cells using PI-9 Monoclonal Antibody