

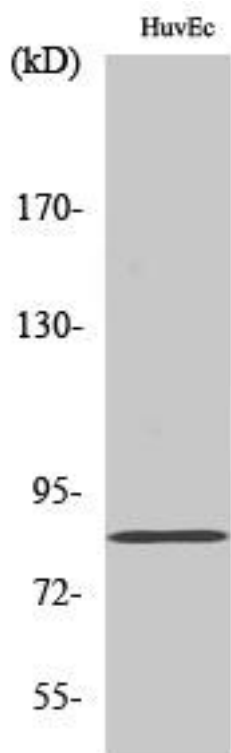


Photomedin-2 Monoclonal Antibody

Catalog No	YP-mAb-04083
Isotype	IgG
Reactivity	Human;Mouse
Applications	WB
Gene Name	OLFML2B
Protein Name	Olfactomedin-like protein 2B
Immunogen	The antiserum was produced against synthesized peptide derived from human OLFML2B. AA range:171-220
Specificity	Photomedin-2 Monoclonal Antibody detects endogenous levels of Photomedin-2 protein.
Formulation	Liquid in PBS containing 50% glycerol, 0.5% BSA and 0.02% sodium azide.
Source	Monoclonal, Mouse,IgG
Purification	The antibody was affinity-purified from mouse antiserum by affinity-chromatography using epitope-specific immunogen.
Dilution	WB 1:500-1:2000
Concentration	1 mg/ml
Purity	≥90%
Storage Stability	-20°C/1 year
Synonyms	OLFML2B; Olfactomedin-like protein 2B; Photomedin-2
Observed Band	84kD
Cell Pathway	Secreted .
Tissue Specificity	Endometrium,PNS,Retina,Testis,Uterus,
Function	PTM:O-glycosylated and N-glycosylated.,similarity:Contains 1 olfactomedin-like domain.,subunit:Homodimer. Binds to heparin and chondroitin sulfate E.,
Background	PTM:O-glycosylated and N-glycosylated.,similarity:Contains 1 olfactomedin-like domain.,subunit:Homodimer. Binds to heparin and chondroitin sulfate E.,
matters needing attention	Avoid repeated freezing and thawing!
Usage suggestions	This product can be used in immunological reaction related experiments. For more information, please consult technical personnel.



Products Images



Western Blot analysis of various cells using
Photomedin-2 Monoclonal Antibody