



PHAX Monoclonal Antibody

Catalog No	YP-mAb-04078
Isotype	IgG
Reactivity	Human;Rat;Mouse;
Applications	WB
Gene Name	PHAX
Protein Name	Phosphorylated adapter RNA export protein
Immunogen	The antiserum was produced against synthesized peptide derived from human RNUXA. AA range:141-190
Specificity	PHAX Monoclonal Antibody detects endogenous levels of PHAX protein.
Formulation	Liquid in PBS containing 50% glycerol, 0.5% BSA and 0.02% sodium azide.
Source	Monoclonal, Mouse,IgG
Purification	The antibody was affinity-purified from mouse antiserum by affinity-chromatography using epitope-specific immunogen.
Dilution	WB 1:500-1:2000
Concentration	1 mg/ml
Purity	≥90%
Storage Stability	-20°C/1 year
Synonyms	PHAX; RNUXA; Phosphorylated adapter RNA export protein; RNA U small nuclear RNA export adapter protein
Observed Band	48kD
Cell Pathway	Nucleus, nucleoplasm . Nucleus, Cajal body . Cytoplasm . Located in the nucleoplasm and Cajal bodies. Shuttles between the nucleus and the cytoplasm. Shuttles between the nucleoplasm and Cajal bodies. .
Tissue Specificity	Retinoblastoma,Skin,
Function	function:A phosphoprotein adapter involved in the XPO1-mediated U snRNA export from the nucleus. Bridge components required for U snRNA export, the cap binding complex (CBC)-bound snRNA on the one hand and the GTPase Ran in its active GTP-bound form together with the export receptor XPO1 on the other. Its phosphorylation in the nucleus is required for U snRNA export complex assembly and export, while its dephosphorylation in the cytoplasm causes export complex disassembly. It is recycled back to the nucleus via the importin alpha/beta heterodimeric import receptor. The directionality of nuclear export is thought to be conferred by an asymmetric distribution of the GTP- and GDP-bound forms of Ran between the cytoplasm and nucleus. Its compartmentalized phosphorylation cycle may also contribute to the directionality of export. Binds strongly to m7G-capped U1 and U5 small nuclear RNAs (snRN



Background

function: A phosphoprotein adapter involved in the XPO1-mediated U snRNA export from the nucleus. Bridge components required for U snRNA export, the cap binding complex (CBC)-bound snRNA on the one hand and the GTPase Ran in its active GTP-bound form together with the export receptor XPO1 on the other. Its phosphorylation in the nucleus is required for U snRNA export complex assembly and export, while its dephosphorylation in the cytoplasm causes export complex disassembly. It is recycled back to the nucleus via the importin alpha/beta heterodimeric import receptor. The directionality of nuclear export is thought to be conferred by an asymmetric distribution of the GTP- and GDP-bound forms of Ran between the cytoplasm and nucleus. Its compartmentalized phosphorylation cycle may also contribute to the directionality of export. Binds strongly to m7G-capped U1 and U5 small nuclear RNAs (snRNAs) in a sequence-unspecific manner and phosphorylation-independent manner (By similarity). Plays also a role in the biogenesis of U3 small nucleolar RNA (snoRNA). Involved in the U3 snoRNA transport from nucleoplasm to Cajal bodies. Binds strongly to m7G-capped U3, U8 and U13 precursor snoRNAs and weakly to trimethylated (TMG)-capped U3, U8 and U13 snoRNAs. Binds also to telomerase RNA.,PTM:Phosphorylated in the nucleus. Dephosphorylated in the cytoplasm (By similarity). Phosphorylated upon DNA damage, probably by ATM or ATR.,PTM:Phosphorylated upon DNA damage, probably by ATM or ATR.,similarity:Belongs to the PHAX family.,subcellular location:Located in the nucleoplasm and Cajal bodies. Shuttles between the nucleus and the cytoplasm. Shuttles between the nucleoplasm and Cajal bodies.,subunit:Found in a U snRNA export complex with PHAX/RNUXA, NCBP1, NCBP2, RAN, XPO1 and m7G-capped RNA. Part of a precomplex with PHAX/RNUXA, NCBP1, NCBP2 and m7G-capped RNA. Interacts with NCBP1 (By similarity). Found in a complex with snoRNA.,

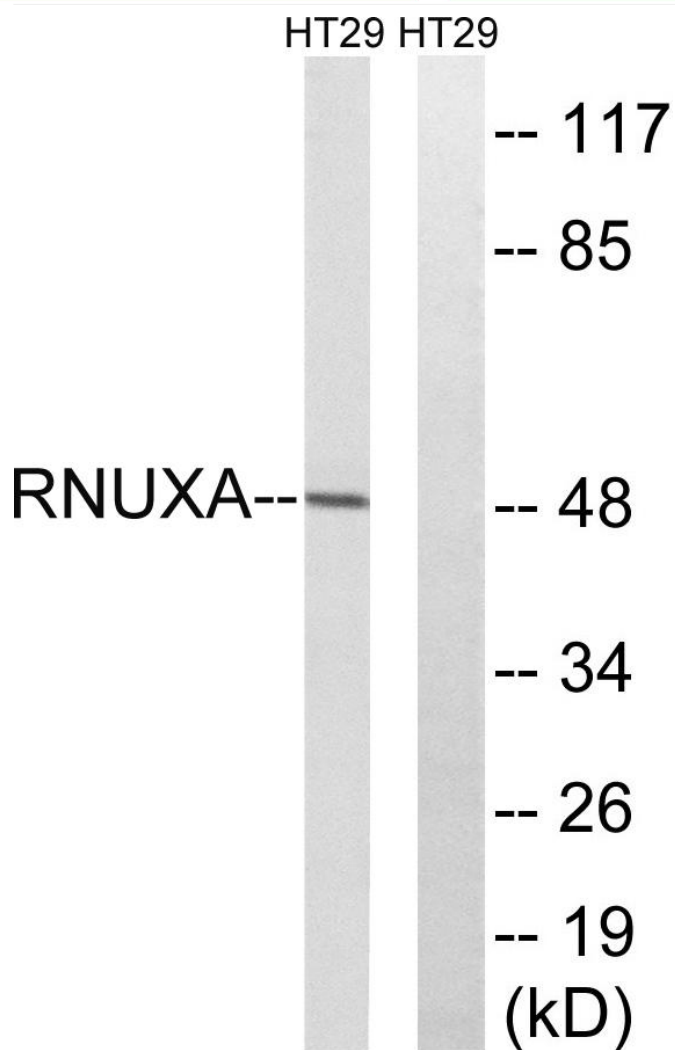
matters needing attention

Avoid repeated freezing and thawing!

Usage suggestions

This product can be used in immunological reaction related experiments. For more information, please consult technical personnel.

Products Images



Western Blot analysis of various cells using PHAX
Monoclonal Antibody