

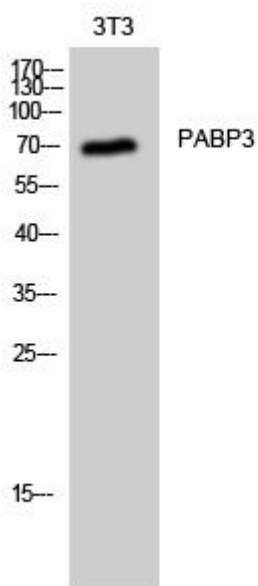


# mAbP3 Monoclonal Antibody

<b>Catalog No</b>	YP-mAb-04055
<b>Isotype</b>	IgG
<b>Reactivity</b>	Human;Rat;Mouse;
<b>Applications</b>	WB
<b>Gene Name</b>	PABPC3
<b>Protein Name</b>	Polyadenylate-binding protein 3
<b>Immunogen</b>	The antiserum was produced against synthesized peptide derived from human PABPC3. AA range:352-401
<b>Specificity</b>	PABP3 Monoclonal Antibody detects endogenous levels of PABP3 protein.
<b>Formulation</b>	Liquid in PBS containing 50% glycerol, 0.5% BSA and 0.02% sodium azide.
<b>Source</b>	Monoclonal, Mouse,IgG
<b>Purification</b>	The antibody was affinity-purified from mouse antiserum by affinity-chromatography using epitope-specific immunogen.
<b>Dilution</b>	WB 1:500-1:2000
<b>Concentration</b>	1 mg/ml
<b>Purity</b>	≥90%
<b>Storage Stability</b>	-20°C/1 year
<b>Synonyms</b>	PABPC3; PABP3; PABPL3; Polyadenylate-binding protein 3; PABP-3; Poly(A)-binding protein 3; Testis-specific poly(A)-binding protein
<b>Observed Band</b>	70kD
<b>Cell Pathway</b>	Cytoplasm .
<b>Tissue Specificity</b>	Testis specific.
<b>Function</b>	function: Binds the poly(A) tail of mRNA. May be involved in cytoplasmic regulatory processes of mRNA metabolism. Binds poly(A) with a slightly lower affinity as compared to MABPC1.,similarity: Belongs to the polyadenylate-binding protein type-1 family.,similarity: Contains 1 MABC domain.,similarity: Contains 4 RRM (RNA recognition motif) domains.,tissue specificity: Testis specific.,
<b>Background</b>	Messenger RNA stability and translation initiation are extensively under the control of poly(A)-binding proteins (MABP). See MABPC1 (MIM 604679) for background information.[supplied by OMIM, Jul 2002],
<b>matters needing attention</b>	Avoid repeated freezing and thawing!

**Usage suggestions**

This product can be used in immunological reaction related experiments. For more information, please consult technical personnel.

**Products Images**

Western Blot analysis of various cells using mAbP3 Monoclonal Antibody