



# OPN Monoclonal Antibody

<b>Catalog No</b>	YP-mAb-04050
<b>Isotype</b>	IgG
<b>Reactivity</b>	Human;Mouse;Rat
<b>Applications</b>	WB
<b>Gene Name</b>	SPP1
<b>Protein Name</b>	Osteopontin
<b>Immunogen</b>	The antiserum was produced against synthesized peptide derived from human Osteopontin. AA range:261-310
<b>Specificity</b>	OPN Monoclonal Antibody detects endogenous levels of OPN protein.
<b>Formulation</b>	Liquid in PBS containing 50% glycerol, 0.5% BSA and 0.02% sodium azide.
<b>Source</b>	Monoclonal, Mouse,IgG
<b>Purification</b>	The antibody was affinity-purified from mouse antiserum by affinity-chromatography using epitope-specific immunogen.
<b>Dilution</b>	WB 1:500-1:2000
<b>Concentration</b>	1 mg/ml
<b>Purity</b>	≥90%
<b>Storage Stability</b>	-20°C/1 year
<b>Synonyms</b>	SPP1; BNSP; OPN; PSEC0156; Osteopontin; Bone sialoprotein 1; Nephropontin; Secreted phosphoprotein 1; SPP-1; Urinary stone protein; Uropontin
<b>Observed Band</b>	60kD
<b>Cell Pathway</b>	Secreted.
<b>Tissue Specificity</b>	Bone. Found in plasma.
<b>Function</b>	disease:This protein plays a principal role in urinary stone formation as the stone matrix.,function:Acts as a cytokine involved in enhancing production of interferon-gamma and interleukin-12 and reducing production of interleukin-10 and is essential in the pathway that leads to type I immunity.,function:Binds tightly to hydroxyapatite. Appears to form an integral part of the mineralized matrix. Probably important to cell-matrix interaction.,online information:Osteopontin entry,PTM:Extensively phosphorylated on clustered serine residues.,PTM:N- and O-glycosylated.,similarity:Belongs to the osteopontin family.,subunit:Ligand for integrin alpha-V/beta-3.,
<b>Background</b>	secreted phosphoprotein 1(SPP1) Homo sapiens The protein encoded by this gene is involved in the attachment of osteoclasts to the mineralized bone matrix. The encoded protein is secreted and binds hydroxyapatite with high affinity. The osteoclast vitronectin receptor is found in the cell membrane and may be involved in the binding to this protein. This protein is also a cytokine that upregulates



expression of interferon-gamma and interleukin-12. Several transcript variants encoding different isoforms have been found for this gene. [provided by RefSeq, Oct 2011],

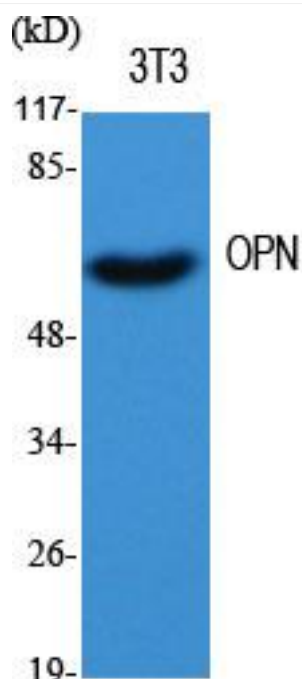
**matters needing attention**

Avoid repeated freezing and thawing!

**Usage suggestions**

This product can be used in immunological reaction related experiments. For more information, please consult technical personnel.

**Products Images**



Western Blot analysis of various cells using OPN Monoclonal Antibody