

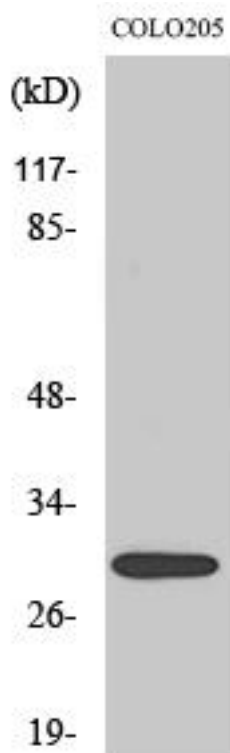


MRP-L9 Monoclonal Antibody

Catalog No	YP-mAb-04003
Isotype	IgG
Reactivity	Human;Rat;Mouse;
Applications	WB
Gene Name	MRPL9
Protein Name	39S ribosomal protein L9 mitochondrial
Immunogen	The antiserum was produced against synthesized peptide derived from human MRPL9. AA range:211-260
Specificity	MRP-L9 Monoclonal Antibody detects endogenous levels of MRP-L9 protein.
Formulation	Liquid in PBS containing 50% glycerol, 0.5% BSA and 0.02% sodium azide.
Source	Monoclonal, Mouse,IgG
Purification	The antibody was affinity-purified from mouse antiserum by affinity-chromatography using epitope-specific immunogen.
Dilution	WB 1:500-1:2000
Concentration	1 mg/ml
Purity	≥90%
Storage Stability	-20°C/1 year
Synonyms	MRPL9; 39S ribosomal protein L9; mitochondrial; L9mt; MRP-L9
Observed Band	30kD
Cell Pathway	Mitochondrion .
Tissue Specificity	Lung,
Function	similarity:Belongs to the ribosomal protein L9P family.,
Background	This is a nuclear gene encoding a protein component of the 39S subunit of the mitochondrial ribosome. Alternative splicing results in multiple transcript variants. A pseudogene of this gene is found on chromosome 8. [provided by RefSeq, Jul 2014],
matters needing attention	Avoid repeated freezing and thawing!
Usage suggestions	This product can be used in immunological reaction related experiments. For more information, please consult technical personnel.



Products Images



Western Blot analysis of various cells using MRP-L9 Monoclonal Antibody