



# MRP-L20 Monoclonal Antibody

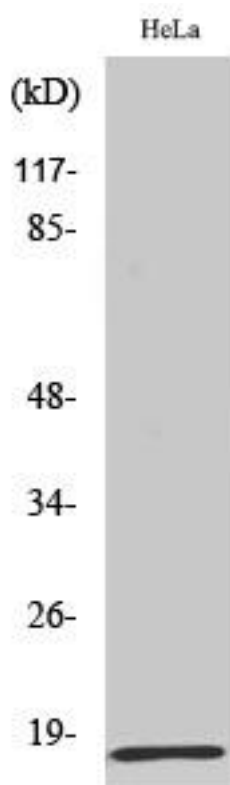
|                           |  |
|---------------------------|--|
| <b>Catalog No</b>         | YP-mAb-03982   |
| <b>Isotype</b>            | IgG  |
| <b>Reactivity</b>         | Human;Mouse;Rat  |
| <b>Applications</b>       | WB   |
| <b>Gene Name</b>          | MRPL20   |
| <b>Protein Name</b>       | 39S ribosomal protein L20 mitochondrial  |
| <b>Immunogen</b>          | The antiserum was produced against synthesized peptide derived from human MRPL20. AA range:100-149   |
| <b>Specificity</b>        | MRP-L20 Monoclonal Antibody detects endogenous levels of MRP-L20 protein.  |
| <b>Formulation</b>        | Liquid in PBS containing 50% glycerol, 0.5% BSA and 0.02% sodium azide.  |
| <b>Source</b>             | Monoclonal, Mouse,IgG  |
| <b>Purification</b>       | The antibody was affinity-purified from mouse antiserum by affinity-chromatography using epitope-specific immunogen.   |
| <b>Dilution</b>           | WB 1:500-1:2000  |
| <b>Concentration</b>      | 1 mg/ml  |
| <b>Purity</b>             | ≥90%   |
| <b>Storage Stability</b>  | -20°C/1 year   |
| <b>Synonyms</b>           | MRPL20; 39S ribosomal protein L20; mitochondrial; L20mt; MRP-L20   |
| <b>Observed Band</b>      | 22kD   |
| <b>Cell Pathway</b>       | Mitochondrion .  |
| <b>Tissue Specificity</b> | Bone marrow,Lymph,Mammary gland,Whole embryo,  |
| <b>Function</b>           | similarity:Belongs to the ribosomal protein L20P family.,  |
| <b>Background</b>         | Mammalian mitochondrial ribosomal proteins are encoded by nuclear genes and help in protein synthesis within the mitochondrion. Mitochondrial ribosomes (mitoribosomes) consist of a small 28S subunit and a large 39S subunit. They have an estimated 75% protein to rRNA composition compared to prokaryotic ribosomes, where this ratio is reversed. Another difference between mammalian mitoribosomes and prokaryotic ribosomes is that the latter contain a 5S rRNA. Among different species, the proteins comprising the mitoribosome differ greatly in sequence, and sometimes in biochemical properties, which prevents easy recognition by sequence homology. This gene encodes a 39S subunit protein. A pseudogene corresponding to this gene is found on chromosome 21q. Alternative splicing results in multiple transcript variants encoding different isoforms. [provided by RefSeq, Jan 2016], |

**matters needing attention**

Avoid repeated freezing and thawing!

**Usage suggestions**

This product can be used in immunological reaction related experiments. For more information, please consult technical personnel.

**Products Images**

Western Blot analysis of various cells using MRP-L20 Monoclonal Antibody