

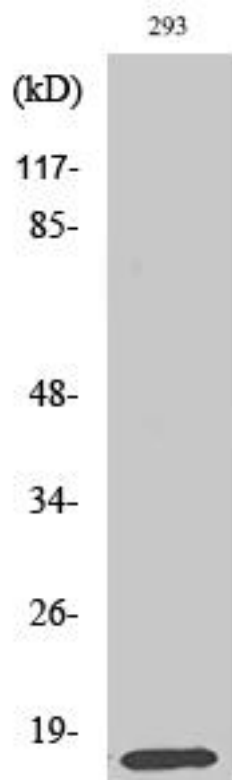


# MRP-L14 Monoclonal Antibody

<b>Catalog No</b>	YP-mAb-03977
<b>Isotype</b>	IgG
<b>Reactivity</b>	Human;Mouse;Rat
<b>Applications</b>	WB
<b>Gene Name</b>	MRPL14
<b>Protein Name</b>	39S ribosomal protein L14 mitochondrial
<b>Immunogen</b>	The antiserum was produced against synthesized peptide derived from human MRPL14. AA range:96-145
<b>Specificity</b>	MRP-L14 Monoclonal Antibody detects endogenous levels of MRP-L14 protein.
<b>Formulation</b>	Liquid in PBS containing 50% glycerol, 0.5% BSA and 0.02% sodium azide.
<b>Source</b>	Monoclonal, Mouse,IgG
<b>Purification</b>	The antibody was affinity-purified from mouse antiserum by affinity-chromatography using epitope-specific immunogen.
<b>Dilution</b>	WB 1:500-1:2000
<b>Concentration</b>	1 mg/ml
<b>Purity</b>	≥90%
<b>Storage Stability</b>	-20°C/1 year
<b>Synonyms</b>	MRPL14; MRPL32; RPML32; 39S ribosomal protein L14; mitochondrial; L14mt; MRP-L14; 39S ribosomal protein L32, mitochondrial; L32mt; MRP-L32
<b>Observed Band</b>	16kD
<b>Cell Pathway</b>	Mitochondrion .
<b>Tissue Specificity</b>	Pancreas,
<b>Function</b>	similarity:Belongs to the ribosomal protein L14P family.,
<b>Background</b>	This nuclear gene encodes a protein component of the 39S subunit of the mitochondrial ribosome. A pseudogene of this gene is found on chromosome 17. [provided by RefSeq, Jan 2016],
<b>matters needing attention</b>	Avoid repeated freezing and thawing!
<b>Usage suggestions</b>	This product can be used in immunological reaction related experiments. For more information, please consult technical personnel.



## Products Images



Western Blot analysis of various cells using MRP-L14 Monoclonal Antibody