



# ME2 Monoclonal Antibody

<b>Catalog No</b>	YP-mAb-03952
<b>Isotype</b>	IgG
<b>Reactivity</b>	Human;Rat;Mouse;
<b>Applications</b>	WB
<b>Gene Name</b>	ME2
<b>Protein Name</b>	NAD-dependent malic enzyme mitochondrial
<b>Immunogen</b>	The antiserum was produced against synthesized peptide derived from human ME2. AA range:201-250
<b>Specificity</b>	ME2 Monoclonal Antibody detects endogenous levels of ME2 protein.
<b>Formulation</b>	Liquid in PBS containing 50% glycerol, 0.5% BSA and 0.02% sodium azide.
<b>Source</b>	Monoclonal, Mouse,IgG
<b>Purification</b>	The antibody was affinity-purified from mouse antiserum by affinity-chromatography using epitope-specific immunogen.
<b>Dilution</b>	WB 1:500-1:2000
<b>Concentration</b>	1 mg/ml
<b>Purity</b>	≥90%
<b>Storage Stability</b>	-20°C/1 year
<b>Synonyms</b>	ME2; NAD-dependent malic enzyme; mitochondrial; NAD-ME; Malic enzyme 2
<b>Observed Band</b>	65kD
<b>Cell Pathway</b>	Mitochondrion matrix .
<b>Tissue Specificity</b>	B-cell,Placenta,Platelet,
<b>Function</b>	catalytic activity:(S)-malate + NAD(+) = pyruvate + CO(2) + NADH.,cofactor:Divalent metal cations. Prefers magnesium or manganese.,enzyme regulation:Subject to allosteric activation by fumarate.,miscellaneous:This isoenzyme can also use NADP(+) but is more effective with NAD(+).,similarity:Belongs to the malic enzymes family.,subunit:Homotetramer.,
<b>Background</b>	This gene encodes a mitochondrial NAD-dependent malic enzyme, a homotetrameric protein, that catalyzes the oxidative decarboxylation of malate to pyruvate. It had previously been weakly linked to a syndrome known as Friedreich ataxia that has since been shown to be the result of mutation in a completely different gene. Certain single-nucleotide polymorphism haplotypes of this gene have been shown to increase the risk for idiopathic generalized epilepsy. Alternatively spliced transcript variants encoding different isoforms found for this gene. [provided by RefSeq, Dec 2009],



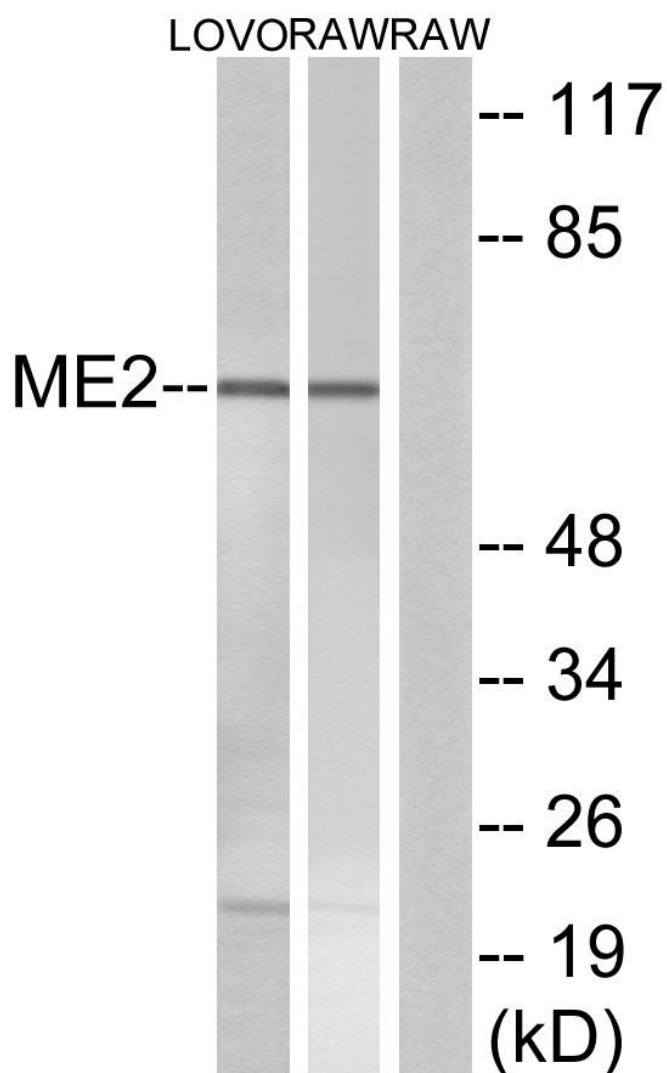
**matters needing attention**

Avoid repeated freezing and thawing!

**Usage suggestions**

This product can be used in immunological reaction related experiments. For more information, please consult technical personnel.

**Products Images**



Western Blot analysis of various cells using ME2 Monoclonal Antibody