



LRRC41 Monoclonal Antibody

| | |
|---------------------------|---|
| Catalog No | YP-mAb-03948 |
| Isotype | IgG |
| Reactivity | Human;Mouse;Rat |
| Applications | WB |
| Gene Name | LRRC41 |
| Protein Name | Leucine-rich repeat-containing protein 41 |
| Immunogen | The antiserum was produced against synthesized peptide derived from human LRRC41. AA range:391-440 |
| Specificity | LRRC41 Monoclonal Antibody detects endogenous levels of LRRC41 protein. |
| Formulation | Liquid in PBS containing 50% glycerol, 0.5% BSA and 0.02% sodium azide. |
| Source | Monoclonal, Mouse,IgG |
| Purification | The antibody was affinity-purified from mouse antiserum by affinity-chromatography using epitope-specific immunogen. |
| Dilution | WB 1:500-1:2000 |
| Concentration | 1 mg/ml |
| Purity | ≥90% |
| Storage Stability | -20°C/1 year |
| Synonyms | LRRC41; MUF1; PP7759; Leucine-rich repeat-containing protein 41; Protein Muf1 |
| Observed Band | 80kD |
| Cell Pathway | nucleus,cytoplasm,membrane, |
| Tissue Specificity | Brain,Endometrium,Epithelium,Pancreas,Testis,Tonsil, |
| Function | caution:It is uncertain whether Met-1 or Met-23 is the initiator.,domain:The elongin BC complex binding domain is also known as BC-box with the consensus [APST]-L-x(3)-C-x(3)-[AILV].,function:Probable substrate recognition component of an ECS (Elongin BC-CUL2/5-SOCS-box protein) E3 ubiquitin ligase complex which mediates the ubiquitination and subsequent proteasomal degradation of target proteins.,pathway:Protein modification; protein ubiquitination.,PTM:Phosphorylated upon DNA damage, probably by ATM or ATR.,sequence caution:Translation N-terminally extended.,similarity:Contains 7 LRR (leucine-rich) repeats.,subunit:Part of an E3 ubiquitin-protein ligase complex with Elongin BC (TCEB1 and TCEB2), RBX1 and CUL5. Component of a probable ECS(LRRC41) complex which contains CUL5, RNF7/RBX2, Elongin BC and LRRC41. Interacts with CUL5, RNF7, TCEB1 and TCEB2., |
| Background | caution:It is uncertain whether Met-1 or Met-23 is the initiator.,domain:The elongin BC complex binding domain is also known as BC-box with the consensus |



[APST]-L-x(3)-C-x(3)-[AILV].,function:Probable substrate recognition component of an ECS (Elongin BC-CUL2/5-SOCS-box protein) E3 ubiquitin ligase complex which mediates the ubiquitination and subsequent proteasomal degradation of target proteins.,pathway:Protein modification; protein ubiquitination.,PTM:Phosphorylated upon DNA damage, probably by ATM or ATR.,sequence caution:Translation N-terminally extended.,similarity:Contains 7 LRR (leucine-rich) repeats.,subunit:Part of an E3 ubiquitin-protein ligase complex with Elongin BC (TCEB1 and TCEB2), RBX1 and CUL5. Component of a probable ECS(LRRC41) complex which contains CUL5, RNF7/RBX2, Elongin BC and LRRC41. Interacts with CUL5, RNF7, TCEB1 and TCEB2.,

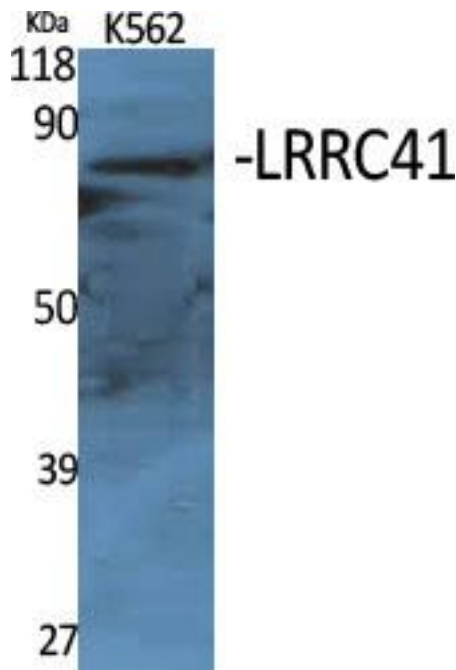
matters needing attention

Avoid repeated freezing and thawing!

Usage suggestions

This product can be used in immunological reaction related experiments. For more information, please consult technical personnel.

Products Images



Western Blot analysis of various cells using LRRC41 Monoclonal Antibody