



# Kanadaptin Monoclonal Antibody

<b>Catalog No</b>	YP-mAb-03940
<b>Isotype</b>	IgG
<b>Reactivity</b>	Human;Mouse
<b>Applications</b>	WB
<b>Gene Name</b>	SLC4A1AP
<b>Protein Name</b>	Kanadaptin
<b>Immunogen</b>	The antiserum was produced against synthesized peptide derived from human NADAP. AA range:421-470
<b>Specificity</b>	Kanadaptin Monoclonal Antibody detects endogenous levels of Kanadaptin protein.
<b>Formulation</b>	Liquid in PBS containing 50% glycerol, 0.5% BSA and 0.02% sodium azide.
<b>Source</b>	Monoclonal, Mouse,IgG
<b>Purification</b>	The antibody was affinity-purified from mouse antiserum by affinity-chromatography using epitope-specific immunogen.
<b>Dilution</b>	WB 1:500-1:2000
<b>Concentration</b>	1 mg/ml
<b>Purity</b>	≥90%
<b>Storage Stability</b>	-20°C/1 year
<b>Synonyms</b>	SLC4A1AP; HLC3; Kanadaptin; Human lung cancer oncogene 3 protein; HLC-3; Kidney anion exchanger adapter protein; Solute carrier family 4 anion exchanger member 1 adapter protein
<b>Observed Band</b>	85kD
<b>Cell Pathway</b>	Nucleus . Cytoplasm . Mainly nuclear. Small amounts are found in the cytoplasm.
<b>Tissue Specificity</b>	Ubiquitously expressed.
<b>Function</b>	caution:PubMed:15764369 initially suggested a role in targeting SLC4A1 (kidney anion exchanger 1) to the plasma membrane; it does not seem to do so as it does not interact with SLC4A1 and has no effect on SLC4A1 trafficking.,online information:Band 3 entry,PTM:Phosphorylated upon DNA damage, probably by ATM or ATR.,similarity:Contains 1 FHA domain.,subcellular location:Mainly nuclear. Small amounts are found in the cytoplasm.,tissue specificity:Ubiquitously expressed.,
<b>Background</b>	caution:PubMed:15764369 initially suggested a role in targeting SLC4A1 (kidney anion exchanger 1) to the plasma membrane; it does not seem to do so as it does not interact with SLC4A1 and has no effect on SLC4A1 trafficking.,online information:Band 3 entry,PTM:Phosphorylated upon DNA damage, probably by ATM or ATR.,similarity:Contains 1 FHA domain.,subcellular location:Mainly



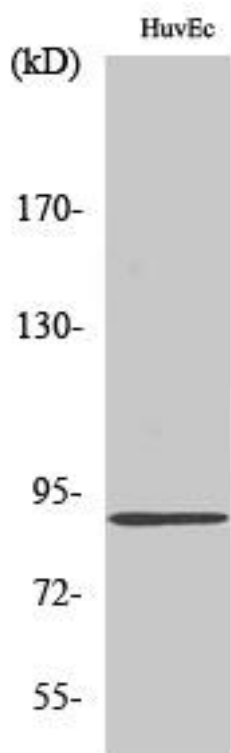
nuclear. Small amounts are found in the cytoplasm.,tissue specificity:Ubiquitously expressed.,

**matters needing attention**

Avoid repeated freezing and thawing!

**Usage suggestions**

This product can be used in immunological reaction related experiments. For more information, please consult technical personnel.

**Products Images**

Western Blot analysis of various cells using Kanadaplin Monoclonal Antibody