



HSP105 Monoclonal Antibody

Catalog No	YP-mAb-03920
Isotype	IgG
Reactivity	Human;Mouse
Applications	WB
Gene Name	HSPH1
Protein Name	Heat shock protein 105 kDa
Immunogen	The antiserum was produced against synthesized peptide derived from human HSP105. AA range:791-840
Specificity	HSP105 Monoclonal Antibody detects endogenous levels of HSP105 protein.
Formulation	Liquid in PBS containing 50% glycerol, 0.5% BSA and 0.02% sodium azide.
Source	Monoclonal, Mouse,IgG
Purification	The antibody was affinity-purified from mouse antiserum by affinity-chromatography using epitope-specific immunogen.
Dilution	WB 1:500-1:2000
Concentration	1 mg/ml
Purity	≥90%
Storage Stability	-20°C/1 year
Synonyms	HSPH1; HSP105; HSP110; KIAA0201; Heat shock protein 105 kDa; Antigen NY-CO-25; Heat shock 110 kDa protein
Observed Band	100kD
Cell Pathway	Cytoplasm .
Tissue Specificity	Highly expressed in testis. Present at lower levels in most brain regions, except cerebellum. Overexpressed in cancer cells.
Function	function:Prevents the aggregation of denatured proteins in cells under severe stress, on which the ATP levels decrease markedly. Inhibits HSPA8/HSC70 ATPase and chaperone activities.,PTM:Phosphorylation on Ser-509 may be important for regulation of the HSPA8/HSC70 chaperone activity.,similarity:Belongs to the heat shock protein 70 family.,subunit:Interacts with HSPA8/HSC70.,tissue specificity:Highly expressed in testis. Present at lower levels in most brain regions, except cerebellum. Overexpressed in cancer cells.,
Background	function:Prevents the aggregation of denatured proteins in cells under severe stress, on which the ATP levels decrease markedly. Inhibits HSPA8/HSC70 ATPase and chaperone activities.,PTM:Phosphorylation on Ser-509 may be important for regulation of the HSPA8/HSC70 chaperone activity.,similarity:Belongs to the heat shock protein 70 family.,subunit:Interacts with HSPA8/HSC70.,tissue specificity:Highly expressed in testis. Present at lower



levels in most brain regions, except cerebellum. Overexpressed in cancer cells.,

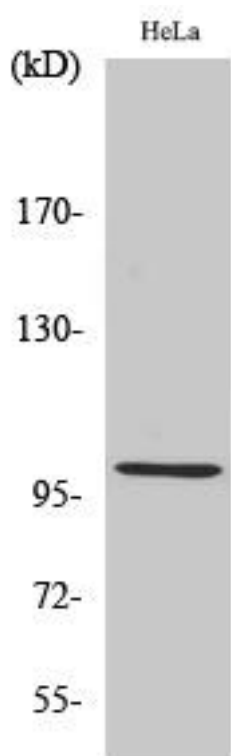
matters needing attention

Avoid repeated freezing and thawing!

Usage suggestions

This product can be used in immunological reaction related experiments. For more information, please consult technical personnel.

Products Images



Western Blot analysis of various cells using HSP105 Monoclonal Antibody